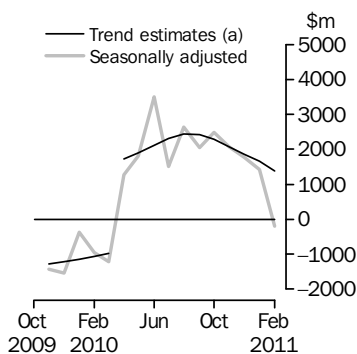


INTERNATIONAL TRADE IN GOODS AND SERVICES

AUSTRALIA

EMBARGO: 11.30AM (CANBERRA TIME) TUES 5 APR 2011

Balance on Goods and Services



(a) A trend break of \$2,500m has been applied to April 2010.

KEY FIGURES

	Dec 2010	Jan 2011	Feb 2011	Jan 11 to Feb 11 %
	\$m	\$m	\$m	change
BALANCE ON GOODS AND SERVICES				
Trend estimates	1 868	1 653	1 390	..
Seasonally adjusted	1 778	1 433	-205	..
CREDITS (Exports of goods & services)				
Trend estimates	24 213	24 111	24 000	—
Seasonally adjusted	24 508	23 397	22 843	-2
DEBITS (Imports of goods & services)				
Trend estimates	22 345	22 458	22 611	1
Seasonally adjusted	22 730	21 964	23 048	5

.. not applicable

— nil or rounded to zero (including null cells)

KEY POINTS

BALANCE ON GOODS AND SERVICES

- The trend estimate of the *balance on goods and services* was a surplus of \$1,390m in February 2011, a decrease of \$263m on the revised surplus in January 2011.
- In seasonally adjusted terms, the *balance on goods and services* was a deficit of \$205m in February 2011, a turnaround of \$1,638m on the revised surplus in January 2011.

CREDITS (EXPORTS OF GOODS & SERVICES)

- In seasonally adjusted terms, *goods and services credits* fell \$554m (2%) to \$22,843m. *Non-monetary gold* fell \$688m (45%) and *non-rural goods* fell \$253m (2%). *Rural goods* rose \$275m (12%) and *net exports of goods under merchanting* remained steady. *Services credits* rose \$112m (3%).

DEBITS (IMPORTS OF GOODS & SERVICES)

- In seasonally adjusted terms, *goods and services debits* rose \$1,084m (5%) to \$23,048m. *Intermediate and other merchandise goods* rose \$854m (12%), *capital goods* rose \$92m (2%), *non-monetary gold* rose \$53m (19%) and *consumption goods* rose \$11m. *Services debits* rose \$75m (2%).

INQUIRIES

For further information contact Selvi Sekhar on Canberra (02) 6252 5540 for Goods, and Lee Taylor on Canberra (02) 6252 6377 for Services.

NOTES

FORTHCOMING ISSUES

ISSUE	RELEASE DATE
March 2011	10 May 2011
April 2011	2 June 2011
May 2011	5 July 2011
June 2011	3 August 2011
July 2011	8 September 2011
August 2011	4 October 2011



REVISIONS

Revisions have been made to incorporate the latest data relating to international merchandise trade and international trade in services. The international trade in goods and services on a balance of payments basis series have been revised from July 2009 onwards.

Table 17 summarises revisions to goods and services on a balance of payments basis, in original current price terms, since the last issue of this publication. In original terms, the revisions have:

- increased the deficit on goods and services for 2009–2010 by \$30m
- decreased the surplus on goods and services for the 7 months to January 2011 by \$388m.

Seasonally adjusted and trend series have been revised due to the incorporation of the revisions and estimates for the latest month.

IRON ORE AND COAL PRICES

An adjustment has been made to the value of the 'metal ores and minerals' component in the balance of payments series. See page 4 – *Commodity prices adjustment* for details.

RELATED PUBLICATIONS

The following publications have recently been released and are detailed in the *Related publications* on page 5:

- Information paper: Proposed changes to statistical codes in the AHECC, 2012
- Characteristics of Australian Exporters, 2009–10.

IMPACT OF THE FLOODS

The collection and processing of data included in this publication were not disrupted. See page 6 – *Impact of the floods*.

JAPANESE EARTHQUAKE AND TSUNAMI

The earthquake and tsunami events in Japan occurred in March 2011. These events have not impacted the activity in this publication. The ABS expects the economic impact on trade between Australia and Japan to be reflected in forthcoming issues.

Brian Pink
Australian Statistician

CONTENTS

	<i>page</i>
Commodity prices adjustment	4
Related publications	5
Impact of the floods	6
Time series data	7
ANALYSIS	
Analysis and comments	9
TABLES	
INTERNATIONAL TRADE IN GOODS AND SERVICES – BALANCE OF PAYMENTS BASIS	
1 Goods and services, summary, seasonally adjusted and trend estimates	14
2 Goods and services, summary, original	15
3 Goods credits, original	16
4 Goods debits, original	17
5 Goods credits, seasonally adjusted	18
6 Goods debits, seasonally adjusted	19
7 Goods credits, trend estimates	20
8 Goods debits, trend estimates	21
9 Services, summary, original	22
10 Services, summary, seasonally adjusted and trend estimates	23
11 Services, original, quarterly	24
INTERNATIONAL MERCHANDISE TRADE – RECORDED TRADE BASIS	
12 International merchandise exports, by commodity	25
13 International merchandise imports, by commodity	28
14 International merchandise trade, by country and country groups	31
15 International merchandise trade, by state	32
OTHER TABLES	
16 Period average exchange rates per Australian dollar	33
17 Summary of revisions, goods and services, original	34
OTHER INFORMATION	
Explanatory notes	35
Appendix – Related articles	41

COMMODITY PRICES ADJUSTMENT

PRICES ADJUSTMENT

International merchandise trade exports data (on a recorded trade basis) presented in tables 12–15 of this publication are based on information provided by exporters to the *Australian Customs and Border Protection Service* (Customs and Border Protection). At the time of initial reporting to Customs and Border Protection the final prices may not be known for some commodities. New contract prices that have been recently negotiated, or are still being negotiated, for commodities like iron ore and coal may not be fully reflected in the Customs and Border Protection source data. Final prices are updated progressively in recorded trade data as exporters revise the information provided to Customs and Border Protection.

A positive \$170m adjustment has been made to the value of the 'metal ores and minerals' component in the balance of payments series for February 2011 to take into account additional information on both the unit price and volume of iron ore exports. No adjustment has been applied to the 'coal, coke and briquettes' component.

RELATED PUBLICATIONS

PROPOSED CHANGES TO
STATISTICAL CODES IN
THE AUSTRALIAN
HARMONIZED EXPORT
COMMODITY
CLASSIFICATION (AHECC)
2012

The *Information paper: Proposed changes to statistical codes in the AHECC, 2012* (cat. no. 5368.0.55.015) was released on the ABS website on 24 March 2011. This information paper presents the proposed Australian Harmonized Export Commodity Classification (AHECC) statistical structure for use from 1 January 2012. Changes to the AHECC result from the introduction of the five yearly review conducted by the World Customs Organisation and the ABS review of statistical codes. This paper enables users of detailed merchandise trade export statistics to review and comment on proposed changes to statistical codes.

CHARACTERISTICS OF
AUSTRALIAN EXPORTERS

The publication *Characteristics of Australian Exporters, 2009–10* (cat. no. 5368.0.55.006) was released on 30 March 2011. This publication analyses the number and characteristics of Australia's exporters. Estimates of exporters of merchandise trade are compiled from data sourced from the Australian Customs and Border Protection Service and from the Australian Taxation Office's Australian Business Register. Estimates on exporters of services are compiled largely from the ABS Survey of International Trade in Services.

IMPACT OF THE FLOODS

IMPACT OF THE FLOODS

Extensive flooding began in late December 2010 in Queensland, and was more extensive in both Queensland and other states in January 2011. The collection and processing of data included in this publication were not disrupted.

On a month to month basis the export and import of goods can be impacted by a number of factors including exchange rates, supply constraints, consumer confidence and seasonal patterns. The impact of an event like the Queensland floods on exports can not be readily quantified. However, the following analysis identifies the major components that in February 2011 with the five year average recorded trade movement between January and February for Queensland*:

- meat and meat preparations rose \$204m, with an average increase of \$105m between January and February over the previous five years
- hard coking coal fell \$106m (10%), with an average decrease of \$131m (15%) between January and February over the previous five years
- bituminous (thermal) coal fell \$50m (21%), with an average decrease of \$85m (23%) between January and February over the previous five years.

*separate estimates for semi-soft coking metallurgical coal for Queensland are not available due to confidentiality restrictions.

A large extreme correction is applied to prevent trend estimates from being biased by an unusually large or small original estimate. Such corrections can also help stabilise seasonal factor estimates. Details on the use of large extreme corrections to stabilise the trend during unusual events can be found in the feature article *When it's not "Business-as-usual": Implications for ABS Time Series* in Australian Economic Indicators, August 2009 (cat. no. 1350.0). Extreme corrections have been applied to the balance of payments basis 'coke, coal and briquettes' component for January and February 2011 in order to stabilise the trend estimate for goods credits. The ABS will continue to monitor this series.

TIME SERIES DATA

TIME SERIES DATA

Tables 1 to 16 of this publication are available free on the ABS website: <http://www.abs.gov.au> from the Downloads tab of this issue with longer time series. A number of these tables present more detailed breakdowns than included in the publication. A number of additional tables are available free on the ABS website.

Tables with more detailed breakdowns:

- 11a Services credits: Original - Quarter¹
- 11b Services debits: Original - Quarter¹
- 12b Merchandise exports by Standard International Trade Classification (3 digit), FOB Value
- 13b Merchandise imports by Standard International Trade Classification (3 digit), Customs Value
- 14a Merchandise exports, Country and Country Groups, FOB Value
- 14b Merchandise imports, Country and Country Groups, Customs Value

Additional tables:

- 31 Merchandise exports by Broad Economic Category (BEC)
- 32a Merchandise exports, Industry (ANZSIC 2006), FOB Value
- 32b Merchandise exports, Industry (ANZSIC 1993), FOB Value
- 33 Merchandise imports by Broad Economic Category (BEC)
- 34 Merchandise imports by Balance of Payments Broad Economic Category (BoPBEC)
- 35a Merchandise imports, Industry (ANZSIC 2006), Customs Value
- 35b Merchandise imports, Industry (ANZSIC 1993), Customs Value
- 36 Merchandise exports, state by country and country groups
- 37 Merchandise imports, state by country and country groups
- 91 Monthly seasonal adjustment factors and forward factors for 12 months.

¹ With a one quarter lag for the more detailed breakdowns.

TIME SERIES DATA *continued*

TRADE IN SERVICES DATA CUBES

Trade in services data cubes are usually updated on an annual basis. Calendar year (cat. no. 5368.0.55.004) statistics are updated in May and financial year (cat. no. 5368.0.55.003) statistics are updated in December.

The following tables were included in the calendar year data cubes:

- 1 International trade in services, credits, state by year
- 2 International trade in services, credits, year by state
- 3 International trade in services, debits, state by year
- 4 International trade in services, debits, year by state
- 5 International trade in services, credits, year by country and service
- 6 International trade in services, credits, service by year and by country
- 7 International trade in services, debits, year by country and service
- 8 International trade in services, debits, service by year and by country
- 9 International trade in services, credits, year by country and travel service
- 10 International trade in services, debits, year by country and travel service
- 11 International trade in services, credits, education related travel, by educational sector, by type of expenditure by year.

ANALYSIS AND COMMENTS

BALANCE ON GOODS AND SERVICES

The trend estimate of the balance on goods and services was a surplus of \$1,390m in February 2011, a decrease of \$263m on the surplus in January 2011.

In seasonally adjusted terms, the balance on goods and services was a deficit of \$205m in February 2011, a turnaround of \$1,638m on the surplus in January 2011.

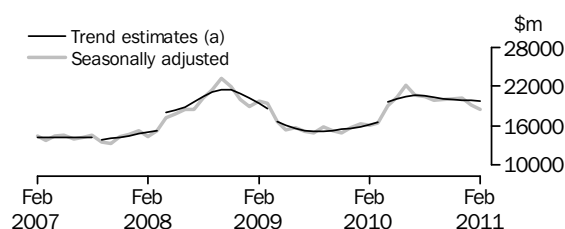
EXPORTS OF GOODS AND SERVICES

Between January 2011 and February 2011 the trend estimate of goods and services credits fell \$111m to \$24,000m.

In seasonally adjusted terms, goods and services credits fell \$554m (2%) to \$22,843m. Non-monetary gold fell \$688m (45%) and non-rural goods fell \$253m (2%). Rural goods rose \$275m (12%) and net exports of goods under merchanting remained steady. Services credits rose \$112m (3%).

Exports of goods

GOODS CREDITS



(a) Trend breaks of \$400m to September 2007, \$1,900m to April 2008, -\$1,400m to April 2009 and \$2,500m to April 2010 have been applied.

RURAL GOODS

In trend terms, exports of rural goods rose \$46m (2%) to \$2,468m.

In seasonally adjusted terms, exports of rural goods rose \$275m (12%) to \$2,606m.

The main components contributing to the rise in the seasonally adjusted estimates were:

- meat and meat preparations, up \$132m (26%)
- other rural, up \$68m (7%)
- cereal grains and cereal preparations, up \$38m (6%).

NON-RURAL GOODS

In trend terms, exports of non-rural goods fell \$103m (1%) to \$16,087m.

In seasonally adjusted terms, exports of non-rural goods fell \$253m (2%) to \$15,073m.

The main component contributing to the fall in the seasonally adjusted estimates was metal ores and minerals, down \$543m (8%).

Partly offsetting this decrease were:

- metals (excl. non-monetary gold), up \$167m (17%)
- other manufactures, up \$101m (8%).

For price and volume details, see the *Selected commodities* table on page 13.

ANALYSIS AND COMMENTS *continued*

Exports of goods *continued*

NET EXPORTS OF GOODS UNDER MERCHANTING

In trend terms, net exports of goods under merchanting fell \$1m to -\$4m.

In seasonally adjusted terms, net exports of goods under merchanting remained steady at \$2m.

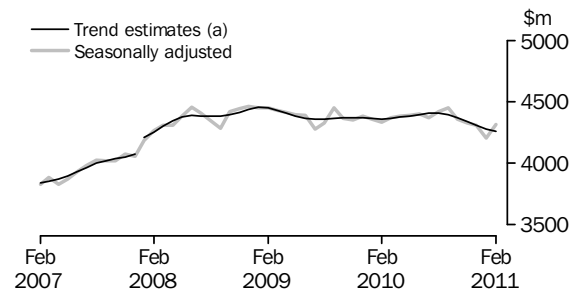
NON-MONETARY GOLD

In trend terms, exports of non-monetary gold fell \$30m (2%) to \$1,190m.

In seasonally adjusted terms, exports of non-monetary gold fell \$688m (45%) to \$847m.

Exports of services

SERVICES CREDITS



(a) A trend break of \$100m has been applied to January 2008.

In trend terms, services credits fell \$23m (1%) to \$4,258m.

In seasonally adjusted terms, services credits rose \$112m (3%) to \$4,315m.

The main component contributing to the rise in the seasonally adjusted estimates was travel, up \$115m (5%).

In seasonally adjusted terms, tourism related services credits rose \$110m (4%) to \$2,895m.

IMPORTS OF GOODS AND SERVICES

Between January 2011 and February 2011 the trend estimate of goods and services debits rose \$153m (1%) to \$22,611m.

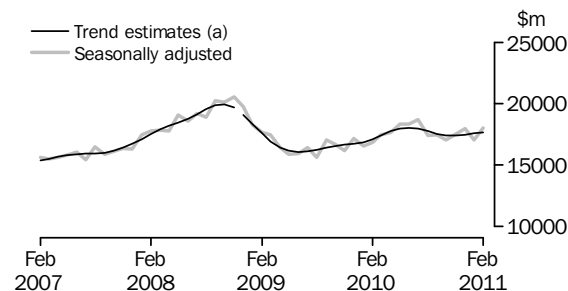
In seasonally adjusted terms, goods and services debits rose \$1,084m (5%) to \$23,048m.

Intermediate and other merchandise goods rose \$854m (12%), capital goods rose \$92m (2%), non-monetary gold rose \$53m (19%) and consumption goods rose \$11m.

Services debits rose \$75m (2%).

Imports of goods

GOODS DEBITS



(a) A trend break of -\$200m has been applied to December 2008.

ANALYSIS AND COMMENTS *continued*

Imports of goods continued

CONSUMPTION GOODS

In trend terms, imports of consumption goods fell \$25m to \$5,254m.

In seasonally adjusted terms, imports of consumption goods rose \$11m to \$5,259m.

The main component contributing to the rise in the seasonally adjusted estimates was textiles, clothing and footwear, up \$60m (9%).

Partly offsetting this increase was the consumption goods n.e.s. component, down \$58m (3%).

CAPITAL GOODS

In trend terms, imports of capital goods rose \$69m (2%) to \$4,135m.

In seasonally adjusted terms, imports of capital goods rose \$92m (2%) to \$4,214m.

The main components contributing to the rise in the seasonally adjusted estimates were:

- civil aircraft and confidentialised items, up \$155m (33%)
- machinery and industrial equipment, up \$81m (6%).

Partly offsetting these increases was the industrial transport equipment n.e.s. component, down \$69m (10%).

INTERMEDIATE AND OTHER MERCHANDISE GOODS

In trend terms, imports of intermediate and other merchandise goods rose \$107m (1%) to \$7,930m.

In seasonally adjusted terms, imports of intermediate and other merchandise goods rose \$854m (12%) to \$8,221m.

The main components contributing to the rise in the seasonally adjusted estimates were:

- fuels and lubricants, up \$561m (26%) after decreasing \$763m (26%) the previous month
- processed industrial supplied n.e.s., up \$98m (5%)
- other parts for capital goods, up \$79m (7%).

ANALYSIS AND COMMENTS *continued*

Imports of goods continued

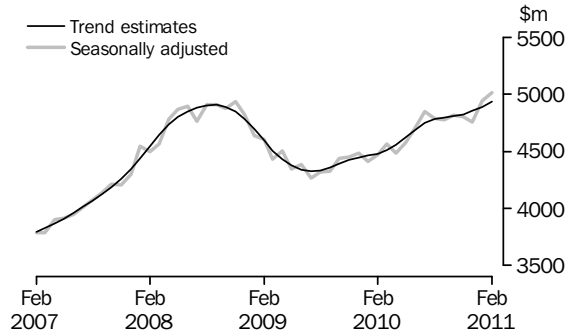
NON-MONETARY GOLD

In trend terms, imports of non-monetary gold fell \$41m (10%) to \$359m.

In seasonally adjusted terms, imports of non-monetary gold rose \$53m (19%) to \$339m.

Imports of services

SERVICES DEBITS



In trend terms, services debits rose \$42m (1%) to \$4,933m.

In seasonally adjusted terms, services debits rose \$75m (2%) to \$5,015m.

The main components contributing to the rise in the seasonally adjusted estimates were:

- travel, up \$54m (2%)
- transport, up \$30m (2%).

In seasonally adjusted terms, tourism related services debits rose \$56m (2%) to \$2,833m.

ANALYSIS AND COMMENTS *continued*

Selected Commodities

SELECTED COMMODITIES, Price and volume analysis: **Recorded Trade Basis**

	Sep 2010	Oct 2010	Nov 2010	Dec 2010	Jan 2011	Feb 2011
	%	%	%	%	%	%
IRON ORE						
Lump						
Volumes	8	10	-11	14	-15	np
Price	-2	-12	1	3	7	np
Fines						
Volumes	4	7	-6	10	-16	np
Price	-2	-11	1	5	7	np
COAL						
Hard coking						
Volumes	-11	-4	10	-6	-39	-9
Price	-4	-6	-6	—	-1	6
Semi-soft						
Volumes	-8	8	-5	3	-33	1
Price	-10	—	-6	-2	-2	5
Bituminous (Thermal)						
Volumes	7	-1	-19	15	-10	-20
Price	-1	-6	—	2	5	2

— nil or rounded to zero (including null cells)

np not available for publication but included in totals where applicable, unless otherwise indicated

On a revised recorded trade basis, between January and February 2011, a large value decrease was recorded for bituminous (thermal) coal which fell \$200m (18%) with exports to Japan down \$160m (25%) and Republic of Korea down \$68m (26%), driven by decreases in volumes of 24% and 32%, respectively.

On a revised merchandise trade basis, between January and February 2011, non-monetary gold fell \$669m (46%). This was driven by a decrease in exports to Thailand, down \$348m (69%), with volumes down 67%, and China down \$183m.

A note on the *Impact of the Floods* on February 2011 exports is on page 6.

GOODS AND SERVICES (a), Summary—Seasonally Adjusted and Trend Estimates

	Mar 2010	Apr 2010	May 2010	Jun 2010	Jul 2010	Aug 2010	Sep 2010	Oct 2010	Nov 2010	Dec 2010	Jan 2011	Feb 2011	
	\$m	\$m	\$m	\$m	\$m	\$m	\$m	\$m	\$m	\$m	\$m	\$m	
SEASONALLY ADJUSTED													
BALANCE													
On goods and services	-1 218	1 266	1 811	3 500	1 505	2 644	2 058	2 495	2 067	1 778	1 433	-205	
CREDITS													
Total goods and services	20 822	23 429	24 733	26 542	25 073	24 834	24 319	24 342	24 390	24 508	23 397	22 843	
Total goods	16 451	19 048	20 344	22 142	20 706	20 413	19 866	19 982	20 060	20 199	19 194	18 528	
Rural goods(b)	2 165	2 066	2 306	2 415	2 580	2 418	2 223	2 375	2 374	2 400	2 331	2 606	
Non-rural goods(b)	13 066	15 798	16 083	18 244	16 858	17 130	16 472	16 061	16 463	16 695	15 326	15 073	
Net exports of goods under merchandise(c)	11	23	23	24	26	26	25	-4	-4	-3	2	2	
Non-monetary gold(c)	1 209	1 161	1 932	1 459	1 242	839	1 146	1 550	1 227	1 106	1 535	847	
Total services	4 371	4 381	4 390	4 400	4 367	4 421	4 453	4 361	4 330	4 309	4 203	4 315	
DEBITS													
Total goods and services	-22 040	-22 163	-22 922	-23 041	-23 568	-22 190	-22 261	-21 847	-22 323	-22 730	-21 964	-23 048	
Total goods	-17 473	-17 682	-18 346	-18 328	-18 721	-17 404	-17 485	-17 031	-17 519	-17 972	-17 023	-18 033	
Consumption goods	-5 200	-5 359	-5 522	-5 555	-5 474	-5 475	-5 447	-5 316	-5 361	-5 329	-5 248	-5 259	
Capital goods	-3 939	-3 968	-4 304	-4 134	-4 113	-4 001	-3 801	-3 786	-4 005	-3 967	-4 122	-4 214	
Intermediate and other merchandise goods	-7 877	-7 543	-7 632	-7 982	-8 748	-7 622	-7 736	-7 327	-7 565	-8 289	-7 367	-8 221	
Non-monetary gold(c)	-457	-813	-887	-657	-387	-305	-501	-602	-588	-387	-286	-339	
Total services	-4 567	-4 481	-4 577	-4 713	-4 847	-4 786	-4 775	-4 816	-4 804	-4 758	-4 940	-5 015	
TREND ESTIMATES (d)													
BALANCE													
On goods and services	-981	1 720	1 906	2 125	2 314	2 441	2 423	2 279	2 078	1 868	1 653	1 390	
CREDITS													
Total goods and services	20 929	24 025	24 518	24 874	25 036	24 989	24 778	24 525	24 335	24 213	24 111	24 000	
Total goods	16 565	19 652	20 132	20 477	20 628	20 582	20 385	20 157	19 998	19 906	19 830	19 742	
Rural goods(b)	2 158	2 227	2 299	2 363	2 402	2 406	2 386	2 365	2 366	2 390	2 422	2 468	
Non-rural goods(b)(e)	13 243	16 221	16 610	16 882	17 000	16 951	16 768	16 546	16 378	16 272	16 190	16 087	
Net exports of goods under merchandise	16	20	23	25	25	21	14	8	3	-1	-3	-4	
Non-monetary gold	1 148	1 184	1 200	1 207	1 201	1 204	1 217	1 238	1 251	1 245	1 220	1 190	
Total services	4 364	4 373	4 385	4 398	4 408	4 407	4 393	4 368	4 337	4 306	4 281	4 258	
DEBITS													
Total goods and services	-21 910	-22 304	-22 611	-22 749	-22 722	-22 548	-22 356	-22 246	-22 258	-22 345	-22 458	-22 611	
Total goods	-17 402	-17 745	-17 986	-18 056	-17 973	-17 767	-17 558	-17 440	-17 435	-17 491	-17 567	-17 678	
Consumption goods	-5 328	-5 401	-5 458	-5 489	-5 494	-5 473	-5 431	-5 381	-5 341	-5 307	-5 279	-5 254	
Capital goods	-3 946	-4 041	-4 103	-4 109	-4 066	-3 989	-3 926	-3 909	-3 942	-4 001	-4 066	-4 135	
Intermediate and other merchandise goods	-7 512	-7 644	-7 771	-7 844	-7 856	-7 797	-7 722	-7 678	-7 687	-7 746	-7 823	-7 930	
Non-monetary gold	-615	-659	-654	-613	-557	-508	-479	-471	-464	-437	-400	-359	
Total services	-4 509	-4 559	-4 625	-4 693	-4 748	-4 781	-4 797	-4 806	-4 823	-4 854	-4 891	-4 933	
(a)	For sign conventions, see paragraph 15 of the Explanatory Notes.						(d)						Caution should be used when interpreting recent trend estimates as they may be affected by unusual economic factors. For more details on trend estimates, please see paragraph 19 of the explanatory notes.
(b)	For all time periods, estimates for sugar, sugar preparations and honey are included in Non-rural goods.						(e)						A trend break of \$2,500m has been applied to Non-rural goods credits and related aggregates in April 2010. This trend break will be reassessed in a future issue.
(c)	This component is not seasonally adjusted.												

GOODS AND SERVICES (a), Summary—Original

	Mar 2010	Apr 2010	May 2010	Jun 2010	Jul 2010	Aug 2010	Sep 2010	Oct 2010	Nov 2010	Dec 2010	Jan 2011	Feb 2011
	\$m	\$m	\$m	\$m	\$m	\$m	\$m	\$m	\$m	\$m	\$m	\$m
BALANCE												
On goods and services	-1 021	1 788	3 215	3 174	1 529	3 191	1 038	2 214	363	2 216	445	755
CREDITS												
Total goods and services	21 300	23 038	25 019	26 005	25 542	25 535	24 603	25 152	23 994	25 597	21 557	21 678
Total goods	16 772	18 584	20 716	21 924	21 127	21 064	20 244	20 624	19 641	21 321	17 471	17 295
Rural goods(b)	2 369	2 061	2 514	2 424	2 561	2 384	2 116	2 353	2 203	2 486	2 034	2 655
Non-rural goods(b)	13 183	15 339	16 247	18 017	17 298	17 815	16 957	16 725	16 215	17 732	13 900	13 791
Net exports of goods under merchanting	11	23	23	24	26	26	25	-4	-4	-3	2	2
Non-monetary gold	1 209	1 161	1 932	1 459	1 242	839	1 146	1 550	1 227	1 106	1 535	847
Total services	4 528	4 454	4 303	4 081	4 415	4 471	4 359	4 528	4 353	4 276	4 086	4 383
DEBITS												
Total goods and services	-22 321	-21 250	-21 804	-22 831	-24 013	-22 344	-23 565	-22 938	-23 631	-23 381	-21 112	-20 923
Total goods	-17 988	-16 863	-17 492	-18 063	-18 896	-17 589	-18 372	-17 866	-19 004	-18 329	-15 948	-16 609
Consumption goods	-5 189	-4 878	-5 077	-5 376	-5 612	-5 591	-5 986	-5 868	-6 131	-5 399	-4 703	-4 768
Capital goods	-4 133	-3 763	-4 194	-4 214	-4 100	-4 015	-3 934	-3 889	-4 442	-4 165	-3 752	-3 738
Intermediate and other merchandise goods	-8 209	-7 409	-7 334	-7 816	-8 797	-7 678	-7 951	-7 507	-7 843	-8 378	-7 207	-7 764
Non-monetary gold	-457	-813	-887	-657	-387	-305	-501	-602	-588	-387	-286	-339
Total services	-4 333	-4 387	-4 312	-4 768	-5 117	-4 755	-5 193	-5 072	-4 627	-5 052	-5 164	-4 314

(a) For sign conventions, see paragraph 15 of the Explanatory Notes.

(b) For all time periods, estimates for sugar, sugar preparations and honey are included in Non-rural goods.

							8 MONTHS ENDED FEBRUARY		Change
	2007-08	2008-09	2009-10	Dec 2010	Jan 2011	Feb 2011	2010	2011	
	\$m	\$m	\$m	\$m	\$m	\$m	\$m	\$m	
Total goods credits	182 956	231 564	201 432	21 321	17 471	17 295	123 436	158 787	28.6
General merchandise	170 475	213 755	186 882	20 218	15 934	16 446	114 728	149 225	30.1
<i>Rural goods(a)</i>	25 494	29 383	25 543	2 486	2 034	2 655	16 175	18 792	16.2
Meat and meat preparations	6 542	7 454	6 350	649	318	602	3 978	4 490	12.9
Cereal grains and cereal preparations	4 975	6 881	5 266	488	668	740	3 328	4 368	31.3
Wool and sheepskins	2 796	2 322	2 307	309	169	323	1 392	1 792	28.7
Other rural(a)	11 181	12 726	11 620	1 040	879	990	7 477	8 142	8.9
<i>Non-rural goods(a)</i>	144 981	184 372	161 339	17 732	13 900	13 791	98 553	130 433	32.3
Metal ores and minerals	41 343	52 015	53 556	6 848	6 038	5 434	30 565	50 053	63.8
Coal, coke and briquettes	24 599	54 957	36 559	3 713	2 654	2 463	22 402	28 823	28.7
Other mineral fuels	18 889	20 707	18 964	2 090	1 674	1 693	11 701	15 279	30.6
Metals (excl. non-monetary gold)	14 039	12 394	10 735	1 173	932	1 044	6 725	8 178	21.6
Machinery	8 750	8 900	7 977	834	491	662	5 212	5 635	8.1
Transport equipment	5 723	5 090	4 073	361	174	359	2 681	2 503	-6.6
Other manufactures	16 965	17 601	16 375	1 502	969	1 268	10 765	10 791	0.2
Other non-rural (incl. sugar and beverages)	13 126	11 077	11 711	1 080	841	734	7 599	8 128	7.0
Goods procured in ports by carriers	1 547	1 631	1 389	131	127	134	903	1 043	15.5
Net exports of goods under merchanting	209	301	250	-3	2	2	169	70	-58.6
Goods acquired under merchanting (negative exports)	-1 528	-2 386	-1 799	-237	-200	-200	-1 203	-1 688	-40.3
Goods sold under merchanting	1 737	2 687	2 049	234	202	202	1 372	1 758	28.1
Non-monetary gold	12 272	17 508	14 300	1 106	1 535	847	8 539	9 492	11.2

(a) For all time periods, estimates for sugar, sugar preparations and honey are included in Other non-rural.

GOODS DEBITS (a), Original

							8 MONTHS		Change
							ENDED FEBRUARY		
	2007-08	2008-09	2009-10	Dec 2010	Jan 2011	Feb 2011	2010	2011	
	\$m	\$m	\$m	\$m	\$m	\$m	\$m	\$m	%
Total goods debits	-204 858	-220 649	-204 250	-18 329	-15 948	-16 609	-133 844	-142 613	-6.6
General merchandise	-197 265	-209 127	-197 387	-17 942	-15 662	-16 270	-129 795	-139 218	-7.3
Consumption goods	-59 371	-61 419	-62 333	-5 399	-4 703	-4 768	-41 813	-44 058	-5.4
Food and beverages, mainly for consumption	-7 840	-8 857	-8 712	-819	-662	-627	-6 015	-6 142	-2.1
Household electrical items	-5 051	-5 488	-5 505	-372	-268	-295	-3 896	-3 423	12.1
Non-industrial transport equipment	-16 872	-13 247	-16 288	-1 529	-1 156	-1 178	-10 196	-11 194	-9.8
Textiles, clothing and footwear	-7 051	-8 287	-7 514	-652	-726	-829	-5 167	-5 873	-13.7
Toys, books and leisure goods	-4 561	-5 277	-4 675	-340	-276	-274	-3 252	-3 200	1.6
Consumption goods n.e.s.	-17 996	-20 263	-19 639	-1 687	-1 615	-1 565	-13 287	-14 226	-7.1
Capital goods	-45 299	-49 843	-46 517	-4 165	-3 752	-3 738	-30 213	-32 035	-6.0
Machinery and industrial equipment	-16 480	-18 488	-15 561	-1 332	-1 198	-1 215	-10 312	-10 434	-1.2
ADP equipment	-7 074	-7 257	-7 633	-649	-527	-469	-4 703	-4 972	-5.7
Telecommunications equipment	-5 790	-6 431	-6 051	-607	-527	-462	-3 951	-4 868	-23.2
Civil aircraft and confidentialised items(b)	-2 691	-5 524	-5 051	-542	-474	-629	-3 530	-3 529	—
Industrial transport equipment n.e.s.	-7 502	-6 527	-6 804	-560	-608	-535	-4 115	-4 714	-14.6
Capital goods n.e.s.	-5 762	-5 616	-5 417	-475	-418	-428	-3 602	-3 518	2.3
Intermediate and other merchandise goods	-92 595	-97 865	-88 537	-8 378	-7 207	-7 764	-57 769	-63 125	-9.3
Food and beverages, mainly for industry	-923	-1 186	-1 035	-97	-81	-117	-680	-784	-15.3
Primary industrial supplies n.e.s.	-1 477	-1 901	-1 346	-148	-95	-84	-884	-1 065	-20.5
Fuels and lubricants	-29 772	-28 213	-26 578	-2 884	-2 121	-2 682	-17 190	-19 019	-10.6
Parts for transport equipment	-8 837	-8 599	-8 221	-653	-673	-648	-5 402	-5 662	-4.8
Parts for ADP equipment	-1 115	-1 067	-973	-76	-67	-59	-624	-611	2.1
Other parts for capital goods	-11 990	-14 312	-13 755	-1 254	-1 045	-1 050	-9 193	-9 407	-2.3
Organic and inorganic chemicals	-4 673	-5 384	-4 355	-351	-371	-366	-2 854	-3 001	-5.2
Paper and paperboard	-2 359	-2 403	-2 299	-186	-187	-169	-1 536	-1 649	-7.4
Textile yarn and fabrics	-1 334	-1 344	-1 170	-87	-86	-86	-806	-763	5.3
Iron and steel	-3 721	-5 528	-3 258	-316	-240	-318	-2 056	-2 557	-24.4
Plastics	-3 064	-3 028	-2 733	-215	-221	-202	-1 784	-1 926	-8.0
Processed industrial supplies n.e.s.	-20 132	-21 919	-20 026	-1 748	-1 825	-1 776	-13 039	-14 340	-10.0
Other merchandise goods(b)	-1 415	-1 401	-1 392	-239	-69	-81	-802	-1 333	-66.2
Goods procured in ports by carriers	-1 783	-1 580	-1 396	-124	-126	-126	-919	-1 008	-9.7
Non-monetary gold	-7 593	-11 522	-6 863	-387	-286	-339	-4 049	-3 395	16.2

— nil or rounded to zero (including null cells)

(a) For sign conventions, see paragraph 15 of the Explanatory Notes.

(b) From July 2008, commodities subject to a 'no commodity details' or 'no value details' restriction are included in Civil aircraft and confidentialised items. For earlier periods, commodities subject to a 'no commodity details' or 'no value details' restriction are included in Other merchandise goods.

GOODS CREDITS, Seasonally Adjusted

	May 2010	Jun 2010	Jul 2010	Aug 2010	Sep 2010	Oct 2010	Nov 2010	Dec 2010	Jan 2011	Feb 2011
	\$m	\$m	\$m	\$m	\$m	\$m	\$m	\$m	\$m	\$m
Total goods credits	20 344	22 142	20 706	20 413	19 866	19 982	20 060	20 199	19 194	18 528
General merchandise	18 389	20 659	19 438	19 548	18 695	18 436	18 837	19 096	17 657	17 679
<i>Rural goods</i>	2 306	2 415	2 580	2 418	2 223	2 375	2 374	2 400	2 331	2 606
Meat and meat preparations	589	626	602	576	540	538	575	608	509	641
Cereal grains and cereal preparations	462	438	542	473	543	680	582	546	599	637
Wool and sheepskins	196	224	222	219	201	201	235	280	248	285
Other rural (a)	1 059	1 127	1 215	1 150	939	955	983	966	975	1 043
<i>Non-rural goods</i>	16 083	18 244	16 858	17 130	16 472	16 061	16 463	16 695	15 326	15 073
Metal ores and minerals	5 830	7 170	6 462	5 926	6 149	6 200	6 487	6 364	6 455	5 912
Coal, coke and briquettes(b)	3 844	4 540	3 801	4 442	4 171	3 806	3 664	3 646	2 606	2 677
Other mineral fuels(c)	1 794	1 997	1 975	1 972	1 700	1 615	1 869	1 926	1 859	1 886
Metals (excl. non-monetary gold)(c)	1 011	939	1 024	998	959	973	1 032	1 115	1 007	1 174
Machinery	718	706	728	763	654	686	674	759	695	702
Transport equipment	348	360	309	312	313	281	289	301	323	362
Other manufactures	1 394	1 416	1 358	1 373	1 332	1 373	1 317	1 461	1 269	1 370
Other non-rural (incl. sugar and beverages)	1 014	986	1 066	1 218	1 071	999	1 006	994	983	852
Goods procured in ports by carriers(c)	131	129	134	127	123	128	126	129	130	137
Net exports of goods under merchanting(d)	23	24	26	26	25	-4	-4	-3	2	2
Non-monetary gold(d)	1 932	1 459	1 242	839	1 146	1 550	1 227	1 106	1 535	847

(a) For all time periods, estimates for sugar, sugar preparations and honey are included in Other non-rural.

(b) Only a length-of-month adjustment has been applied to this component.

(c) In using these seasonally adjusted series, care should be exercised because of the difficulties associated with reliably estimating the seasonal pattern.

(d) This component is not seasonally adjusted.

GOODS DEBITS(a), Seasonally Adjusted

	May 2010	Jun 2010	Jul 2010	Aug 2010	Sep 2010	Oct 2010	Nov 2010	Dec 2010	Jan 2011	Feb 2011
	\$m	\$m	\$m	\$m	\$m	\$m	\$m	\$m	\$m	\$m
Total goods debits	-18 346	-18 328	-18 721	-17 404	-17 485	-17 031	-17 519	-17 972	-17 023	-18 033
General merchandise	-17 459	-17 671	-18 334	-17 099	-16 984	-16 429	-16 931	-17 585	-16 737	-17 694
<i>Consumption goods</i>	-5 522	-5 555	-5 474	-5 475	-5 447	-5 316	-5 361	-5 329	-5 248	-5 259
Food and beverages, mainly for consumption	-738	-773	-778	-770	-769	-736	-720	-718	-707	-721
Household electrical items	-506	-452	-440	-425	-434	-410	-420	-376	-375	-377
Non-industrial transport equipment	-1 516	-1 488	-1 427	-1 393	-1 392	-1 385	-1 415	-1 419	-1 366	-1 374
Textiles, clothing and footwear	-685	-702	-706	-727	-712	-680	-698	-688	-648	-708
Toys, books and leisure goods	-385	-403	-379	-381	-389	-404	-393	-388	-376	-361
Consumption goods n.e.s.	-1 692	-1 736	-1 745	-1 779	-1 751	-1 700	-1 715	-1 740	-1 776	-1 718
<i>Capital goods</i>	-4 304	-4 134	-4 113	-4 001	-3 801	-3 786	-4 005	-3 967	-4 122	-4 214
Machinery and industrial equipment	-1 425	-1 376	-1 345	-1 285	-1 341	-1 276	-1 263	-1 226	-1 251	-1 332
ADP equipment	-763	-694	-729	-713	-659	-602	-621	-605	-593	-581
Telecommunications equipment	-546	-521	-559	-673	-563	-604	-615	-586	-664	-606
Civil aircraft and confidentialised items(b)(c)	-436	-438	-424	-244	-327	-274	-615	-542	-474	-629
Industrial transport equipment n.e.s.	-683	-651	-633	-620	-479	-582	-544	-563	-676	-607
Capital goods n.e.s.	-451	-454	-423	-467	-432	-448	-347	-445	-464	-458
<i>Intermediate and other merchandise goods</i>	-7 632	-7 982	-8 748	-7 622	-7 736	-7 327	-7 565	-8 289	-7 367	-8 221
Food and beverages, mainly for industry	-82	-92	-91	-94	-89	-99	-98	-94	-88	-129
Primary industrial supplies n.e.s.(d)	-126	-120	-165	-101	-138	-131	-135	-116	-112	-113
Fuels and lubricants(c)	-2 177	-2 456	-2 427	-2 080	-2 301	-2 107	-2 417	-2 884	-2 121	-2 682
Parts for transport equipment	-745	-725	-763	-715	-723	-680	-680	-675	-712	-697
Parts for ADP equipment	-84	-85	-84	-87	-81	-84	-83	-73	-74	-71
Other parts for capital goods	-1 153	-1 188	-1 237	-1 218	-1 173	-1 140	-1 142	-1 174	-1 140	-1 219
Organic and inorganic chemicals	-405	-376	-453	-412	-356	-360	-364	-358	-349	-361
Paper and paperboard	-205	-221	-207	-213	-201	-195	-196	-198	-194	-187
Textile yarn and fabrics	-95	-98	-105	-99	-93	-90	-88	-91	-88	-92
Iron and steel	-346	-338	-397	-318	-300	-299	-280	-305	-254	-326
Plastics	-246	-257	-261	-258	-245	-231	-217	-220	-230	-229
Processed industrial supplies n.e.s.	-1 771	-1 827	-1 873	-1 794	-1 775	-1 709	-1 671	-1 739	-1 809	-1 907
Other merchandise goods(b)(e)	-78	-79	-555	-104	-135	-79	-71	-239	-69	-81
Goods procured in ports by carriers(c)	-119	-120	-129	-129	-128	-123	-123	-124	-126	-126
Non-monetary gold(c)	-887	-657	-387	-305	-501	-602	-588	-387	-286	-339

(a) For sign conventions, see paragraph 15 of the Explanatory Notes.

(b) From July 2008, commodities subject to a 'no commodity details' or 'no value details' restriction are included in Civil aircraft and confidentialised items. For earlier periods, commodities subject to a 'no commodity details' or 'no value details' restriction are included in Other merchandise goods.

(c) This component is not seasonally adjusted.

(d) In using these seasonally adjusted series, care should be exercised because of the difficulties associated with reliably estimating the seasonal pattern.

(e) From July 1981, this component is not seasonally adjusted.

GOODS CREDITS(a), Trend Estimates

	May 2010	Jun 2010	Jul 2010	Aug 2010	Sep 2010	Oct 2010	Nov 2010	Dec 2010	Jan 2011	Feb 2011
	\$m	\$m	\$m	\$m	\$m	\$m	\$m	\$m	\$m	\$m
Total goods credits	20 132	20 477	20 628	20 582	20 385	20 157	19 998	19 906	19 830	19 742
General merchandise	18 909	19 245	19 402	19 357	19 154	18 911	18 744	18 661	18 613	18 555
<i>Rural goods</i>	2 299	2 363	2 402	2 406	2 386	2 365	2 366	2 390	2 422	2 468
Meat and meat preparations	577	589	590	581	568	561	562	569	578	589
Cereal grains and cereal preparations	446	467	497	529	557	577	591	600	607	616
Wool and sheepskins	209	210	211	212	216	224	235	249	262	275
Other rural(b)	1 068	1 097	1 104	1 084	1 044	1 003	978	971	974	988
<i>Non-rural goods</i>	16 610	16 882	17 000	16 951	16 768	16 546	16 378	16 272	16 190	16 087
Metal ores and minerals(c)	6 210	6 306	6 337	6 334	6 310	6 282	6 278	6 288	6 285	6 271
Coal, coke and briquettes(d)	3 860	4 016	4 141	4 167	4 077	3 920	3 762	3 625	3 514	3 392
Other mineral fuels	1 953	1 953	1 914	1 860	1 819	1 804	1 808	1 829	1 856	1 884
Metals (excl. non-monetary gold)	983	988	989	987	990	1 005	1 029	1 055	1 082	1 110
Machinery	701	711	714	711	706	701	700	702	705	707
Transport equipment	351	340	326	311	301	297	301	309	320	331
Other manufactures	1 383	1 380	1 375	1 368	1 362	1 359	1 357	1 356	1 355	1 352
Other non-rural (incl. sugar and beverages)	1 043	1 060	1 075	1 083	1 076	1 052	1 016	978	942	907
Goods procured in ports by carriers	127	129	129	128	127	127	127	129	131	133
Net exports of goods under merchanting	23	25	25	21	14	8	3	-1	-3	-4
Non-monetary gold	1 200	1 207	1 201	1 204	1 217	1 238	1 251	1 245	1 220	1 190

(a) Caution should be used when interpreting recent trend estimates as they may be affected by unusual economic factors. For more details on trend estimates, please see paragraph 19 of the explanatory notes.

(b) For all time periods, estimates for sugar, sugar preparations and honey are included in Other non-rural.

(c) An estimated trend correction of \$1,400m has been applied to Metal ores and minerals and related aggregates in April 2010. This trend break will be reassessed in a future issue.

(d) An estimated trend correction of \$1,100m has been applied to Coal, coke and briquettes and related aggregates in April 2010. This trend break will be reassessed in a future issue.

	May 2010	Jun 2010	Jul 2010	Aug 2010	Sep 2010	Oct 2010	Nov 2010	Dec 2010	Jan 2011	Feb 2011
	\$m	\$m	\$m	\$m	\$m	\$m	\$m	\$m	\$m	\$m
Total goods debits	-17 986	-18 056	-17 973	-17 767	-17 558	-17 440	-17 435	-17 491	-17 567	-17 678
General merchandise	-17 332	-17 443	-17 416	-17 259	-17 079	-16 969	-16 970	-17 054	-17 167	-17 319
<i>Consumption goods</i>	-5 458	-5 489	-5 494	-5 473	-5 431	-5 381	-5 341	-5 307	-5 279	-5 254
Food and beverages, mainly for consumption	-739	-755	-766	-767	-759	-744	-731	-721	-713	-708
Household electrical items	-447	-450	-448	-440	-427	-413	-402	-392	-382	-374
Non-industrial transport equipment	-1 517	-1 485	-1 448	-1 417	-1 401	-1 396	-1 394	-1 392	-1 388	-1 385
Textiles, clothing and footwear	-680	-695	-707	-711	-707	-698	-690	-684	-681	-678
Toys, books and leisure goods	-385	-387	-389	-391	-392	-391	-389	-385	-380	-374
Consumption goods n.e.s.	-1 689	-1 717	-1 737	-1 746	-1 745	-1 738	-1 734	-1 734	-1 735	-1 736
<i>Capital goods</i>	-4 103	-4 109	-4 066	-3 989	-3 926	-3 909	-3 942	-4 001	-4 066	-4 135
Machinery and industrial equipment	-1 351	-1 363	-1 354	-1 330	-1 303	-1 281	-1 269	-1 265	-1 266	-1 272
ADP equipment	-711	-716	-709	-691	-665	-639	-617	-601	-588	-579
Telecommunications equipment	-532	-555	-576	-591	-601	-607	-611	-615	-619	-619
Civil aircraft and confidentialised items(c)	-365	-357	-355	-353	-364	-398	-450	-505	-554	-600
Industrial transport equipment n.e.s.	-677	-659	-624	-588	-565	-560	-568	-584	-601	-619
Capital goods n.e.s.	-467	-460	-448	-436	-428	-425	-426	-430	-438	-445
<i>Intermediate and other merchandise goods</i>	-7 771	-7 844	-7 856	-7 797	-7 722	-7 678	-7 687	-7 746	-7 823	-7 930
Food and beverages, mainly for industry	-90	-90	-91	-92	-93	-94	-96	-99	-103	-107
Primary industrial supplies n.e.s.	-132	-132	-132	-132	-131	-128	-125	-121	-117	-116
Fuels and lubricants	-2 325	-2 321	-2 300	-2 272	-2 277	-2 320	-2 382	-2 449	-2 511	-2 572
Parts for transport equipment	-724	-730	-731	-724	-712	-699	-691	-689	-688	-692
Parts for ADP equipment	-83	-84	-84	-85	-84	-82	-79	-77	-74	-72
Other parts for capital goods	-1 144	-1 165	-1 185	-1 192	-1 185	-1 170	-1 160	-1 160	-1 164	-1 173
Organic and inorganic chemicals	-385	-396	-401	-397	-386	-372	-362	-356	-352	-352
Paper and paperboard	-209	-211	-210	-208	-204	-200	-197	-194	-192	-190
Textile yarn and fabrics	-98	-98	-98	-97	-95	-92	-90	-89	-89	-89
Iron and steel	-336	-345	-344	-333	-317	-302	-292	-288	-287	-292
Plastics	-252	-255	-255	-251	-243	-235	-229	-225	-222	-222
Processed industrial supplies n.e.s.	-1 785	-1 808	-1 811	-1 792	-1 763	-1 743	-1 741	-1 758	-1 784	-1 819
Other merchandise goods(c)	-88	-85	-88	-97	-106	-114	-118	-118	-115	-109
Goods procured in ports by carriers	-122	-124	-125	-126	-126	-126	-125	-125	-124	-125
Non-monetary gold	-654	-613	-557	-508	-479	-471	-464	-437	-400	-359

(a) For sign conventions, see paragraph 15 of the Explanatory Notes.

(b) Caution should be used when interpreting recent trend estimates as they may be affected by unusual economic factors. For more details on trend estimates, please see paragraph 19 of the explanatory notes.

(c) From July 2008, commodities subject to a 'no commodity details' or 'no value details' restriction are included in Civil aircraft and confidentialised items. For earlier periods, commodities subject to a 'no commodity details' or 'no value details' restriction are included in Other merchandise goods.

							8 MONTHS ENDED FEBRUARY		Change
	2007-08	2008-09	2009-10	Dec 2010	Jan 2011	Feb 2011	2010	2011	
	\$m	\$m	\$m	\$m	\$m	\$m	\$m	\$m	
Services credits	50 105	52 877	52 323	4 276	4 086	4 383	34 957	34 871	-0.2
Manufacturing services on physical inputs owned by others	77	258	284	16	12	8	210	125	-40.5
Maintenance and repair services n.i.e.	103	86	57	6	2	3	44	37	-15.9
Transport	8 510	7 342	6 189	556	550	523	4 230	4 382	3.6
Passenger(c)	3 843	3 410	2 610	263	278	251	1 822	1 942	6.6
Freight	1 464	851	436	32	30	30	274	260	-5.1
Other	2 262	2 127	2 187	189	176	176	1 462	1 526	4.4
Postal and courier services(d)	941	954	956	72	66	66	672	654	-2.7
Travel	28 250	31 096	33 020	2 546	2 446	2 774	22 016	21 519	-2.3
Other services	13 165	14 095	12 773	1 152	1 076	1 075	8 457	8 808	4.2
Services debits	-53 055	-56 170	-53 434	-5 052	-5 164	-4 314	-35 634	-39 294	-10.3
Manufacturing services on physical inputs owned by others	-7	-4	-6	—	—	—	-6	-4	33.3
Maintenance and repair services n.i.e.	-117	-193	-294	-17	-20	-15	-195	-150	23.1
Transport	-16 427	-15 832	-13 727	-1 295	-1 106	-1 122	-8 884	-9 947	-12.0
Passenger(c)	-6 998	-5 835	-5 118	-574	-499	-480	-3 289	-4 072	-23.8
Freight	-8 923	-9 386	-8 142	-693	-580	-615	-5 250	-5 599	-6.6
Other	-327	-437	-309	-23	-23	-23	-214	-190	11.2
Postal and courier services(d)	-179	-174	-158	-5	-4	-4	-131	-86	34.4
Travel	-20 153	-22 082	-23 285	-2 257	-2 605	-1 744	-15 813	-17 734	-12.1
Other services	-16 351	-18 059	-16 122	-1 483	-1 433	-1 433	-10 736	-11 459	-6.7
Memorandum items:									
Tourism related service credits(e)	32 093	34 506	35 630	2 809	2 724	3 025	23 838	23 461	-1.6
Tourism related service debits(e)	-27 151	-27 917	-28 403	-2 831	-3 104	-2 224	-19 102	-21 806	-14.2

— nil or rounded to zero (including null cells)

(a) For sign conventions, see paragraph 15 of the Explanatory Notes.

(b) For more detailed trade in services components, see table 11.

(c) Passenger services includes agency fees and commissions for air transport.

(d) Postal and courier services includes indirect commissions for sea transport.

(e) For a more detailed explanation of tourism related services, see paragraph 27 of the Explanatory Notes.

	May 2010	Jun 2010	Jul 2010	Aug 2010	Sep 2010	Oct 2010	Nov 2010	Dec 2010	Jan 2011	Feb 2011
	\$m	\$m	\$m	\$m	\$m	\$m	\$m	\$m	\$m	\$m
SEASONALLY ADJUSTED										
Services credits	4 390	4 400	4 367	4 421	4 453	4 361	4 330	4 309	4 203	4 315
Manufacturing services on physical inputs owned by others(b)	13	13	17	15	17	20	20	16	12	8
Maintenance and repair services n.i.e.(b)	3	3	6	4	4	4	8	6	2	3
Transport	525	528	554	556	558	533	515	514	520	513
Passenger(c)	222	224	236	240	240	238	226	228	230	226
Freight(d)	40	39	38	35	34	32	32	32	33	32
Other	188	190	197	198	198	185	181	179	183	182
Postal and courier services(e)	75	75	84	84	84	77	76	76	75	73
Travel	2 763	2 770	2 690	2 747	2 770	2 708	2 691	2 676	2 554	2 669
Other services	1 086	1 087	1 100	1 099	1 105	1 096	1 095	1 096	1 114	1 122
Services debits	-4 577	-4 713	-4 847	-4 786	-4 775	-4 816	-4 804	-4 758	-4 940	-5 015
Manufacturing services on physical inputs owned by others(b)	—	—	-2	-1	—	—	-1	—	—	—
Maintenance and repair services n.i.e.(b)	-33	-29	-17	-23	-11	-31	-16	-17	-20	-15
Transport	-1 240	-1 298	-1 308	-1 273	-1 237	-1 193	-1 193	-1 183	-1 215	-1 245
Passenger(c)	-434	-460	-484	-501	-488	-504	-504	-513	-544	-547
Freight	-778	-809	-786	-735	-711	-659	-658	-640	-642	-670
Other(b)	-23	-22	-24	-24	-25	-24	-24	-23	-23	-23
Postal and courier services(e)(d)	-5	-7	-15	-13	-13	-7	-7	-6	-6	-6
Travel	-1 971	-2 062	-2 123	-2 080	-2 120	-2 136	-2 134	-2 113	-2 232	-2 286
Other services	-1 332	-1 324	-1 396	-1 410	-1 408	-1 456	-1 460	-1 446	-1 473	-1 469
Memorandum items:										
Tourism related service credits(f)	2 985	2 993	2 926	2 987	3 010	2 946	2 917	2 904	2 785	2 895
Tourism related service debits(f)	-2 405	-2 522	-2 607	-2 580	-2 608	-2 640	-2 638	-2 626	-2 777	-2 833
TREND ESTIMATES										
Services credits	4 385	4 398	4 408	4 407	4 393	4 368	4 337	4 306	4 281	4 258
Manufacturing services on physical inputs owned by others	17	16	16	16	17	18	17	16	14	12
Maintenance and repair services n.i.e.	4	4	4	5	5	5	5	5	4	4
Transport	526	536	544	548	545	537	528	520	514	510
Passenger(c)	221	226	232	236	237	235	233	230	228	226
Freight	39	39	38	36	34	33	32	32	32	32
Other	189	192	194	194	192	189	185	183	181	179
Postal and courier services(e)	77	79	80	81	81	80	78	76	74	73
Travel	2 759	2 752	2 748	2 740	2 728	2 709	2 686	2 662	2 641	2 620
Other services	1 079	1 090	1 096	1 099	1 099	1 099	1 101	1 104	1 108	1 112
Services debits	-4 625	-4 693	-4 748	-4 781	-4 797	-4 806	-4 823	-4 854	-4 891	-4 933
Manufacturing services on physical inputs owned by others	—	—	-1	-1	-1	—	—	—	—	—
Maintenance and repair services n.i.e.	-26	-24	-22	-21	-20	-20	-19	-19	-18	-17
Transport	-1 256	-1 271	-1 274	-1 262	-1 241	-1 220	-1 206	-1 202	-1 203	-1 210
Passenger(c)	-459	-466	-475	-484	-494	-503	-512	-521	-531	-540
Freight	-764	-773	-765	-743	-712	-683	-662	-650	-644	-643
Other	-24	-23	-23	-24	-24	-24	-24	-23	-23	-23
Postal and courier services(e)	-9	-9	-10	-11	-11	-9	-8	-6	-5	-5
Travel	-2 003	-2 041	-2 075	-2 098	-2 114	-2 128	-2 147	-2 173	-2 202	-2 233
Other services	-1 340	-1 356	-1 377	-1 400	-1 421	-1 439	-1 451	-1 460	-1 467	-1 472
Memorandum items:										
Tourism related service credits(f)	2 980	2 978	2 980	2 976	2 965	2 944	2 918	2 892	2 868	2 846
Tourism related service debits(f)	-2 462	-2 508	-2 550	-2 582	-2 608	-2 631	-2 659	-2 694	-2 733	-2 773

— nil or rounded to zero (including null cells)

(a) For sign conventions, see paragraph 15 of the Explanatory Notes.

(b) This component is not seasonally adjusted.

(c) Passenger services includes agency fees and commissions for air transport.

(d) In using these seasonally adjusted series, care should be exercised because of the difficulties associated with reliably estimating the seasonal pattern.

(e) Postal and courier services includes indirect commissions for sea transport.

(f) For a more detailed explanation of tourism related services, see paragraph 27 of the Explanatory Notes.

	CREDITS				DEBITS			
	Mar Qtr	Jun Qtr	Sep Qtr	Dec Qtr	Mar Qtr	Jun Qtr	Sep Qtr	Dec Qtr
	2010	2010	2010	2010	2010	2010	2010	2010
	\$m	\$m	\$m	\$m	\$m	\$m	\$m	\$m
Services	13 165	12 838	13 245	13 157	-12 812	-13 467	-15 065	-14 751
Manufacturing services on physical inputs owned by others	75	50	49	56	-2	—	-3	-1
Maintenance and repair services n.i.e.	13	9	14	18	-90	-78	-51	-64
Transport	1 589	1 441	1 701	1 608	-3 380	-3 571	-3 951	-3 768
Passenger(b)	750	550	682	731	-1 271	-1 344	-1 558	-1 535
Freight	96	129	106	94	-1 995	-2 143	-2 257	-2 147
Other	527	550	605	569	-79	-68	-73	-71
Postal and courier services(c)	216	212	308	214	-35	-16	-63	-15
Travel	8 492	8 026	8 269	8 030	-5 450	-5 732	-6 922	-6 463
Business	733	719	761	753	-751	-735	-871	-793
Personal	7 759	7 307	7 508	7 277	-4 699	-4 997	-6 051	-5 670
Education-related	4 427	4 689	4 638	3 931	-219	-181	-317	-189
Other(d)	3 332	2 618	2 870	3 346	-4 480	-4 816	-5 734	-5 481
Construction	21	32	23	16	—	—	—	—
Insurance and pension services	72	93	86	87	-158	-155	-156	-147
Financial services	240	243	228	245	-179	-138	-164	-183
Charges for the use of intellectual property n.i.e.	264	255	202	306	-842	-960	-923	-984
Telecommunications, computer and information services	418	436	446	516	-496	-479	-491	-572
Telecommunication services	57	44	44	40	-135	-97	-100	-114
Computer and information services	361	392	402	476	-361	-382	-391	-458
Computer services	293	323	302	354	-296	-315	-316	-384
Information services	9	15	20	32	-7	-9	-19	-21
Other services	59	54	80	90	-58	-58	-56	-53
Other business services	1 561	1 843	1 817	1 896	-1 610	-1 816	-1 888	-1 963
Research and development services	113	136	132	169	-54	-65	-42	-70
Professional and management consulting services	694	813	730	845	-561	-608	-652	-706
Legal, accounting, management consulting, public relations and other professional services	613	733	662	734	-513	-559	-611	-652
Advertising, market research and public opinion polling	81	80	68	111	-48	-49	-41	-54
Technical, trade-related and other business services	754	894	955	882	-995	-1 143	-1 194	-1 187
Architectural, engineering and other technical services	384	500	474	473	-477	-603	-661	-637
Waste treatment and de-pollution, agricultural and mining services	63	70	94	38	-117	-122	-146	-203
Operational leasing services	94	82	72	53	-147	-146	-140	-129
Trade-related commission services	108	124	203	210	-44	-55	-57	-54
Other business services n.i.e.	105	118	112	108	-210	-217	-190	-164
Personal, cultural and recreational services	204	194	200	169	-383	-316	-294	-384
Audiovisual and related services	48	31	34	27	-292	-270	-252	-312
Other personal, cultural and recreational services	156	163	166	142	-91	-46	-42	-72
Government goods and services n.i.e.	216	216	210	210	-222	-222	-222	-222
Memorandum items:								
Gross insurance premiums receivable / payable	174	218	217	227	-276	-282	-290	-281
Gross insurance claims payable / receivable	-120	-155	-150	-156	312	317	321	319
Tourism related services(e)	9 242	8 576	8 951	8 761	-6 721	-7 076	-8 480	-7 998

— nil or rounded to zero (including null cells)

(a) For sign conventions, see paragraph 15 of the Explanatory Notes.

(b) Passenger services includes agency fees and commissions for air transport.

(c) Postal and courier services includes indirect commissions for sea transport.

(d) Other personal travel includes health-related travel.

(e) For a more detailed explanation of tourism related services, see paragraph 27 of the Explanatory Notes.

	Dec 2010	Jan 2011	Feb 2011	Per cent of total merchandise exports(b)	8 MONTHS ENDED FEBRUARY	
					2010	2011
					\$m	\$m
MAJOR COMMODITIES (c)						
011 Meat of bovine animals	419	177	400	2.3	2 536	2 910
041 Wheat and meslin	385	543	577	3.4	2 355	3 355
281 Iron ore and concentrates	5 010	4 488	3 591	21.1	19 134	36 461
283 Copper ores and concentrates	435	383	484	2.8	2 819	3 483
285 Aluminium ores and concentrates	433	455	377	2.2	3 154	3 417
287 Ores and concentrates of base metals, n.e.s.	417	334	314	1.8	2 317	2 859
321 Coal, not agglomerated	3 687	2 648	2 437	14.3	22 350	28 699
333 Crude petroleum oils	1 000	657	775	4.6	5 189	7 064
343 Natural gas	870	880	749	4.4	4 998	6 821
542 Medicaments	366	175	253	1.5	2 392	2 223
682 Copper	377	256	300	1.8	1 615	2 537
684 Aluminium	415	319	375	2.2	2 601	2 933
781 Motor vehicles for transport of people	169	58	134	0.8	1 150	1 075
971 Gold, non-monetary	1 056	1 464	795	4.7	8 251	9 064
SECTION AND DIVISION OF THE SITC						
0 Food and live animals						
00 Live animals (excl. fish, crustaceans, molluscs and aquatic invertebrates)	117	57	79	0.5	806	749
01 Meat and meat preparations	649	318	602	3.5	3 978	4 490
02 Dairy products and birds' eggs	201	170	185	1.1	1 263	1 520
03 Fish (not marine mammals), crustaceans, molluscs and aquatic invertebrates, and preparations thereof	112	113	79	0.5	679	693
04 Cereals and cereal preparations	488	668	740	4.3	3 328	4 369
05 Vegetables and fruit	118	94	123	0.7	990	940
06 Sugars, sugar preparations and honey	30	23	15	0.1	196	231
07 Coffee, tea, cocoa, spices, and manufactures thereof	24	19	25	0.1	197	201
08 Feeding stuff for animals (excl. unmilled cereals)	84	58	81	0.5	704	651
09 Miscellaneous edible products and preparations	75	52	70	0.4	455	523
<i>Total Food and live animals</i>	<i>1 898</i>	<i>1 572</i>	<i>1 999</i>	<i>11.7</i>	<i>12 597</i>	<i>14 367</i>
1 Beverages and tobacco						
11 Beverages	214	125	167	1.0	1 562	1 481
12 Tobacco and tobacco manufactures	16	11	9	0.1	82	88
<i>Total Beverages and tobacco</i>	<i>230</i>	<i>136</i>	<i>175</i>	<i>1.0</i>	<i>1 644</i>	<i>1 569</i>
2 Crude materials, inedible, except fuels						
21 Hides, skins and furskins, raw	79	40	69	0.4	348	509
22 Oil-seeds and oleaginous fruits	43	145	98	0.6	434	391
23 Crude rubber (incl. synthetic and reclaimed)	1	1	1	—	8	10
24 Cork and wood	104	61	102	0.6	741	824
25 Pulp and waste paper	25	20	22	0.1	147	174
26 Textile fibres and their wastes (not manufactured into yarn or fabric)	289	165	298	1.8	1 642	2 194
27 Crude fertilizers (excl. those of Division 56) and crude minerals (excl. coal, petroleum and precious stones)	37	29	30	0.2	183	248
28 Metalliferous ores and metal scrap	6 811	6 010	5 234	30.7	30 186	49 638
29 Crude animal and vegetable materials, n.e.s.	22	12	15	0.1	133	138
<i>Total Crude materials, inedible, except fuels</i>	<i>7 411</i>	<i>6 483</i>	<i>5 868</i>	<i>34.5</i>	<i>33 821</i>	<i>54 125</i>
3 Mineral fuels, lubricants and related materials						
32 Coal, coke and briquettes	3 713	2 654	2 463	14.5	22 402	28 823
33 Petroleum, petroleum products and related materials	1 224	820	962	5.7	6 809	8 670
34 Gas, natural and manufactured	989	977	857	5.0	5 745	7 593
<i>Total Mineral fuels, lubricants and related materials</i>	<i>5 926</i>	<i>4 451</i>	<i>4 282</i>	<i>25.2</i>	<i>34 956</i>	<i>45 086</i>

— nil or rounded to zero (including null cells)

(a) Some SITC sections and divisions exclude commodities subject to a confidentiality restriction. These are included in Division 98. For more information see paragraph 26 of the Explanatory Notes.

(b) Per cent of total merchandise is calculated for the most recent month.

(c) The 'Major commodities' section lists commodities at the SITC Rev 4 3-digit level which are the most significant (by value) or are of particular interest. Abbreviated descriptors have been used. The list of 'Major commodities' is reviewed annually.

	Dec 2010	Jan 2011	Feb 2011	Per cent of total merchandise exports(b)	8 MONTHS ENDED FEBRUARY	
					2010	2011
					\$m	\$m
SECTION AND DIVISION OF THE SITC						
4	Animal and vegetable oils, fats and waxes					
41	25	20	39	0.2	157	216
42	12	11	18	0.1	100	102
43	Fats and oils (processed), waxes and inedible mixtures or preparations, of animal or vegetable origin, n.e.s.					
	1	—	1	—	9	6
	<i>Total Animal and vegetable oils, fats and waxes</i>					
	39	31	57	0.3	265	324
5	Chemicals and related products, n.e.s.					
51	18	11	14	0.1	105	123
52	53	54	44	0.3	344	391
53	53	51	70	0.4	443	468
54	400	199	280	1.6	2 660	2 480
55	Essential oils and resinoids and perfume materials, toilet, polishing and cleansing preparations					
	62	44	54	0.3	399	435
56	7	10	11	0.1	259	247
57	31	23	25	0.1	175	236
58	22	18	27	0.2	237	236
59	83	67	80	0.5	645	635
	<i>Total Chemicals and related products, n.e.s.</i>					
	728	477	606	3.6	5 267	5 253
6	Manufactured goods classified chiefly by material					
61	26	12	20	0.1	162	177
62	16	11	18	0.1	121	126
63	14	5	13	0.1	92	101
64	67	59	74	0.4	434	534
65	24	13	21	0.1	187	173
66	54	43	64	0.4	509	468
67	148	95	96	0.6	616	906
68	1 025	837	948	5.6	6 107	7 272
69	100	63	84	0.5	702	710
	<i>Total Manufactured goods classified chiefly by material</i>					
	1 474	1 139	1 338	7.9	8 929	10 467
7	Machinery and transport equipment					
71	84	47	79	0.5	512	575
72	215	95	155	0.9	1 202	1 306
73	17	6	17	0.1	91	90
74	General industrial machinery and equipment, n.e.s. and machine parts, n.e.s.					
	200	118	131	0.8	1 113	1 221
75	94	80	86	0.5	658	779
76	Telecommunications and sound recording and reproducing apparatus and equipment					
	90	69	76	0.4	634	651
77	Electrical machinery, apparatus and appliances, parts (incl. non electrical counterparts of electrical domestic equip)					
	132	78	116	0.7	995	998
78	270	118	235	1.4	1 774	1 816
79	91	55	124	0.7	905	683
	<i>Total Machinery and transport equipment</i>					
	1 192	664	1 017	6.0	7 886	8 120

— nil or rounded to zero (including null cells)

(b) Per cent of total merchandise is calculated for the most recent month.

(a) Some SITC sections and divisions exclude commodities subject to a confidentiality restriction. These are included in Division 98. For more information see paragraph 26 of the Explanatory Notes.

	Dec	Jan	Feb	Per cent	8 MONTHS		
	2010	2011	2011	of total	ENDED FEBRUARY		
	\$m	\$m	\$m	merchandise	2010	2011	
				exports(b)			
				%	\$m	\$m	
SECTION AND DIVISION OF THE SITC							
8	Miscellaneous manufactured articles						
81	Prefabricated buildings and sanitary, plumbing, heating and lighting fixtures and fittings, n.e.s.						
	11	5	7	—	110	76	
82	Furniture and parts thereof; bedding, mattresses, mattress supports, cushions and similar stuffed furnishings						
	8	5	7	—	70	61	
83	Travel goods, handbags and similar containers						
	3	2	3	—	23	19	
84	Articles of apparel and clothing accessories						
	19	15	21	0.1	160	159	
85	Footwear						
	4	2	4	—	29	28	
87	Professional, scientific and controlling instruments and apparatus, n.e.s.						
	190	117	144	0.8	1 307	1 261	
88	Photographic apparatus, equipment and supplies and optical goods, n.e.s., watches and clocks						
	27	19	19	0.1	193	174	
89	Miscellaneous manufactured articles, n.e.s.						
	207	119	162	1.0	1 385	1 453	
	<i>Total Miscellaneous manufactured articles</i>	<i>470</i>	<i>282</i>	<i>366</i>	<i>2.1</i>	<i>3 275</i>	<i>3 230</i>
9	Commodities and transactions not classified elsewhere in the SITC						
93	Special transactions and commodities not classified according to kind						
	129	88	94	0.6	1 254	959	
95	Gold coin whether or not legal tender, and other coin being legal tender						
	50	71	53	0.3	288	432	
96	Coin (excl. gold coin) not being legal tender						
	—	—	—	—	—	—	
97	Gold, non-monetary (excl. gold ores and concentrates)						
	1 056	1 464	795	4.7	8 251	9 064	
98	Combined confidential items excl. some of SITC 280 (exports only) and some of SITCs 510 and 520 (imports only)						
	643	528	370	2.2	4 484	5 053	
	<i>Commodities and transactions not classified elsewhere in the SITC</i>	<i>1 878</i>	<i>2 152</i>	<i>1 313</i>	<i>7.7</i>	<i>14 276</i>	<i>15 509</i>
	Total merchandise exports	21 246	17 386	17 021	100.0	122 918	158 050
	Balance of Payments Adjustments	75	85	274	..	518	737
	Goods Credits (exports) on a Balance of Payments Basis	21 321	17 471	17 295	..	123 436	158 787

.. not applicable
 — nil or rounded to zero (including null cells)

(a) Some SITC sections and divisions exclude commodities subject to a confidentiality restriction. These are included in Division 98. For more information see paragraph 26 of the Explanatory Notes.
 (b) Per cent of total merchandise is calculated for the most recent month.

	Dec	Jan	Feb	Per cent	8 MONTHS	
	2010	2011	2011	of total	ENDED FEBRUARY	
	\$m	\$m	\$m	merchandise	2010	2011
				imports(b)		
				%	\$m	\$m
MAJOR COMMODITIES (c)						
333 Crude petroleum oils	1 827	1 368	1 554	9.4	9 468	11 464
334 Refined petroleum oils	874	651	1 024	6.2	7 014	6 491
542 Medicaments	603	671	630	3.8	4 906	5 414
723 Civil engineering and contractors' plant and equipment	264	248	261	1.6	1 679	2 116
743 Air pumps, compressors or fans; hoods; centrifuges; filtering apparatus; parts	145	133	109	0.7	2 450	1 252
752 Automatic data processing machines	541	427	385	2.3	3 723	4 066
761 Televisions, monitors and projectors	154	130	137	0.8	2 215	1 784
764 Telecommunications equipment	697	587	520	3.1	4 535	5 444
781 Motor cars for the transport of persons	1 370	1 018	1 085	6.6	9 244	10 082
782 Motor vehicles for the transport of goods	407	409	490	3.0	3 616	3 678
784 Parts and accessories of the motor vehicles	190	180	190	1.1	1 550	1 683
894 Baby carriages, toys, games and sporting goods	184	138	137	0.8	1 854	1 825
971 Gold, non-monetary	387	286	474	2.9	4 599	3 729
SECTION AND DIVISION OF THE SITC						
0 Food and live animals						
00 Live animals other than fish, crustaceans, molluscs and aquatic invertebrates	2	8	27	0.2	72	90
01 Meat and meat preparations	41	37	40	0.2	351	351
02 Dairy products and birds' eggs	55	45	50	0.3	386	455
03 Fish (not marine mammals), crustaceans, molluscs and aquatic invertebrates, and preparations thereof	122	105	92	0.6	860	879
04 Cereals and cereal preparations	63	55	56	0.3	552	541
05 Vegetables and fruit	166	140	131	0.8	1 066	1 119
06 Sugars, sugar preparations and honey	28	22	42	0.3	190	226
07 Coffee, tea, cocoa, spices, and manufactures thereof	113	101	95	0.6	805	874
08 Feeding stuff for animals (excl. unmilled cereals)	44	33	40	0.2	401	366
09 Miscellaneous edible products and preparations	128	117	114	0.7	1 078	1 105
<i>Total Food and live animals</i>	762	662	687	4.1	5 761	6 007
1 Beverages and tobacco						
11 Beverages	154	96	85	0.5	1 059	1 044
12 Tobacco and tobacco manufactures	20	23	17	0.1	163	162
<i>Total Beverages and tobacco</i>	175	120	101	0.6	1 222	1 206
2 Crude materials, inedible, except fuels						
21 Hides, skins and furskins, raw	—	—	—	—	—	1
22 Oil-seeds and oleaginous fruits	5	4	4	—	34	34
23 Crude rubber (incl. synthetic and reclaimed)	9	11	11	0.1	88	84
24 Cork and wood	51	53	51	0.3	392	460
25 Pulp and waste paper	15	16	10	0.1	124	126
26 Textile fibres and their wastes (not manufactured into yarn or fabric)	7	11	9	0.1	94	72
27 Crude fertilizers (excl. those of Division 56) and crude minerals (excl. coal, petroleum and precious stones)	27	7	17	0.1	82	150
28 Metalliferous ores and metal scrap	67	25	24	0.1	338	494
29 Crude animal and vegetable materials, n.e.s.	31	32	25	0.2	217	214
<i>Total Crude materials, inedible, except fuels</i>	212	158	152	0.9	1 370	1 636
3 Mineral fuels, lubricants and related materials						
32 Coal, coke and briquettes	3	6	1	—	16	36
33 Petroleum, petroleum products and related materials	2 758	2 062	2 607	15.7	16 772	18 343
34 Gas, natural and manufactured	249	157	163	1.0	1 057	1 636
<i>Total Mineral fuels, lubricants and related materials</i>	3 010	2 225	2 771	16.7	17 845	20 015

— nil or rounded to zero (including null cells)

(a) Some SITC sections and divisions exclude commodities subject to a confidentiality restriction. These are included in Division 98. For more information see paragraph 26 of the Explanatory Notes.

(b) Per cent of total merchandise is calculated for the most recent month.

(c) The 'Major commodities' section lists commodities at the SITC Rev 4 3-digit level which are the most significant (by value) or are of particular interest. Abbreviated descriptors have been used. The list of 'Major commodities' is reviewed annually.

	Dec 2010	Jan 2011	Feb 2011	Per cent of total merchandise imports(b)	8 MONTHS ENDED FEBRUARY	
					2010	2011
					\$m	\$m
SECTION AND DIVISION OF THE SITC						
4	Animal and vegetable oils, fats and waxes					
41	3	5	3	—	20	26
42	43	19	40	0.2	294	308
43	Fats and oils (processed), waxes and inedible mixtures or preparations, of animal or vegetable n.e.s.					
	4	5	4	—	46	39
	<i>Total Animal and vegetable oils, fats and waxes</i>					
	50	28	47	0.3	360	374
5	Chemicals and related products, n.e.s.					
51	264	290	248	1.5	2 129	2 227
52	87	81	119	0.7	729	780
53	52	53	49	0.3	408	433
54	721	825	766	4.6	6 002	6 561
55	Essential oils and resinoids and perfume materials; toilet, polishing and cleansing preparations					
	161	140	133	0.8	1 221	1 270
56	144	120	121	0.7	412	784
57	104	110	101	0.6	865	963
58	111	111	101	0.6	917	963
59	197	175	167	1.0	1 259	1 447
	<i>Total Chemicals and related products, n.e.s.</i>					
	1 842	1 905	1 805	10.9	13 942	15 428
6	Manufactured goods classified chiefly by material					
61	11	13	11	0.1	91	96
62	241	228	234	1.4	1 806	1 968
63	56	65	60	0.4	421	493
64	223	216	198	1.2	1 810	1 934
65	196	187	199	1.2	1 623	1 680
66	192	195	189	1.1	1 752	1 679
67	316	240	318	1.9	2 056	2 557
68	190	218	326	2.0	1 570	1 649
69	411	492	404	2.4	3 390	3 610
	<i>Total Manufactured goods classified chiefly by material</i>					
	1 836	1 854	1 938	11.7	14 519	15 666
7	Machinery and transport equipment					
71	349	384	331	2.0	3 050	2 869
72	556	516	521	3.1	4 469	4 534
73	49	47	59	0.4	385	409
74	General industrial machinery and equipment, n.e.s. and machine parts, n.e.s.					
	896	738	741	4.5	7 888	6 894
75	774	630	564	3.4	5 654	5 963
76	Telecommunications and sound recording and reproducing apparatus and equipment					
	932	771	702	4.2	7 605	7 939
77	Electrical machinery, apparatus, appliances, parts (incl. non-elec. counterparts of electrical domestic equip)					
	1 004	862	879	5.3	6 225	7 553
78	2 130	1 735	1 880	11.3	15 588	16 682
79	223	292	113	0.7	1 508	1 621
	<i>Total Machinery and transport equipment</i>					
	6 914	5 976	5 791	34.9	52 372	54 465

— nil or rounded to zero (including null cells)

(b) Per cent of total merchandise is calculated for the most recent month.

(a) Some SITC sections and divisions exclude commodities subject to a confidentiality restriction. These are included in Division 98. For more information see paragraph 26 of the Explanatory Notes.

	Dec 2010	Jan 2011	Feb 2011	Per cent of total merchandise imports(b)	8 MONTHS ENDED FEBRUARY	
					2010	2011
					\$m	\$m
SECTION AND DIVISION OF THE SITC						
8	Miscellaneous manufactured articles					
81	Prefabricated buildings; sanitary, plumbing, heating and lighting fixtures and fittings, n.e.s.	81	71	65	0.4	529 645
82	Furniture, parts thereof; bedding, mattresses, mattress supports, cushions and similar stuffed furnishings	239	210	191	1.2	1 800 1 879
83	Travel goods, handbags and similar containers	72	66	65	0.4	541 583
84	Articles of apparel and clothing accessories	417	496	572	3.5	3 361 3 871
85	Footwear	114	117	133	0.8	908 982
87	Professional, scientific and controlling instruments and apparatus, n.e.s.	425	355	354	2.1	3 026 3 158
88	Photographic apparatus, equipment and supplies and optical goods, n.e.s., watches and clocks	123	101	95	0.6	954 947
89	Miscellaneous manufactured articles, n.e.s. <i>Total Miscellaneous manufactured articles</i>	768 2 240	671 2 086	694 2 168	4.2 13.1	6 920 18 040 6 963 19 030
9	Commodities and transactions not classified elsewhere in the SITC					
93	Special transactions and commodities not classified according to kind	3	2	3	—	26 23
95	Gold coin whether or not legal tender, and other coin being legal tender	2	1	1	—	6 8
96	Coin (excl. gold coin) not being legal tender	—	—	—	—	1 2
97	Gold, non-monetary (excl. gold ores and concentrates)	387	286	474	2.9	4 599 3 729
98	Combined confidential items excl. some of SITC 280 (exports only) and some of SITCs 510 and 520 (imports only) <i>Total Commodities and transactions not classified elsewhere in the SITC</i>	716 1 108	474 763	629 1 107	3.8 6.7	3 530 8 162 4 175 7 938
Total merchandise imports		18 149	15 777	16 569	100.0	133 592 141 764
Balance of Payments Adjustments		180	171	40	..	252 849
Goods Debits (imports) on a Balance of Payments Basis		18 329	15 948	16 609	..	133 844 142 613

.. not applicable
— nil or rounded to zero (including null cells)

(a) Some SITC sections and divisions exclude commodities subject to a confidentiality restriction. These are included in Division 98. For more information see paragraph 26 of the Explanatory Notes.

(b) Per cent of total merchandise is calculated for the most recent month.

	EXPORTS				IMPORTS (b)				BALANCE OF MERCHANDISE TRADE	
	2009-10	Feb	8 months	8 months	2009-10	Feb	8 Months	8 Months	2009-10	8 Months
		2011	February	ended		ended	2011	February		Ended
	\$m	\$m	\$m	\$m	\$m	\$m	\$m	\$m		
Belgium	1 079	79	632	832	1 560	138	1 064	1 088	-481	-256
Brazil	1 294	80	734	959	620	56	386	570	674	389
Canada	1 295	121	808	842	1 726	124	1 145	1 152	-431	-309
China	46 518	4 074	27 591	41 347	36 374	3 172	24 690	28 423	10 144	12 925
Denmark	141	12	90	96	1 105	85	798	663	-965	-568
Egypt(c)	411	72	267	384	26	1	19	18	385	366
Fiji	306	25	206	207	163	14	104	132	143	75
Finland	285	5	150	93	664	57	430	503	-379	-410
France	1 121	53	702	638	3 885	263	2 637	2 558	-2 764	-1 920
Germany	1 654	223	903	1 306	10 718	724	6 990	6 717	-9 064	-5 411
Hong Kong (SAR of China)	2 719	228	1 747	2 165	1 129	74	791	783	1 590	1 381
India	16 179	1 196	10 090	9 942	1 845	147	1 246	1 419	14 334	8 523
Indonesia	4 329	344	2 786	2 930	4 685	328	3 118	3 754	-356	-823
Iran	149	16	92	105	114	3	73	112	35	-7
Iraq	196	53	167	116	—	—	—	—	196	116
Ireland	121	9	75	85	2 305	143	1 509	1 476	-2 185	-1 391
Israel	176	42	97	152	573	53	373	401	-397	-249
Italy	948	91	618	827	4 814	306	3 231	3 191	-3 866	-2 364
Japan	37 069	3 247	23 036	30 756	17 779	1 481	11 538	11 801	19 290	18 955
Korea, Republic of	16 494	1 458	9 826	14 669	7 049	435	4 495	4 478	9 444	10 191
Kuwait	525	52	354	360	417	44	255	207	108	153
Malaysia	3 133	239	1 991	2 570	8 504	621	5 267	5 723	-5 371	-3 152
Mexico	741	55	519	423	1 235	120	782	1 042	-494	-619
Netherlands	2 058	210	1 207	1 830	1 360	103	931	901	698	929
New Zealand	8 027	592	5 370	5 205	7 004	608	4 495	4 829	1 022	376
Pakistan	610	40	400	247	153	15	96	110	457	137
Papua New Guinea	1 972	198	1 301	1 415	2 930	209	2 002	2 157	-958	-743
Philippines	1 092	166	695	1 015	461	34	302	302	631	712
Saudi Arabia	1 533	130	957	955	462	23	320	205	1 072	749
Singapore	5 046	443	3 443	3 446	10 899	1 005	6 935	7 037	-5 853	-3 592
South Africa	1 762	161	1 070	1 119	1 004	41	661	699	757	420
Spain	493	50	274	496	1 679	134	1 108	1 095	-1 186	-598
Sweden	441	10	228	287	2 084	160	1 340	1 486	-1 643	-1 199
Switzerland	269	25	157	221	2 231	277	1 527	1 616	-1 962	-1 395
Taiwan	6 851	712	4 005	5 881	3 416	237	2 281	2 423	3 435	3 458
Thailand	4 704	548	3 210	4 656	12 444	842	7 951	6 302	-7 740	-1 645
Turkey	304	20	166	311	459	39	300	328	-155	-17
United Arab Emirates	1 974	195	1 273	1 515	2 293	199	1 554	1 580	-318	-65
United Kingdom	7 211	159	3 278	4 217	5 759	420	3 905	3 815	1 452	401
United States of America	9 546	714	6 158	5 822	21 856	1 728	14 032	15 045	-12 310	-9 223
Viet Nam	1 408	157	899	1 204	3 110	153	1 925	1 829	-1 702	-625
Other Countries(b)	8 534	718	5 345	6 400	16 688	1 953	10 984	13 793	-8 154	-7 393
Total	200 720	17 021	122 918	158 050	203 590	16 569	133 592	141 764	-2 870	16 286
APEC	151 968	13 412	93 988	125 260	144 014	11 471	94 005	99 200	7 955	26 060
ASEAN	19 859	1 913	13 119	15 938	41 092	3 053	26 191	25 730	-21 232	-9 792
Developing Countries	121 921	10 759	74 850	99 552	102 860	8 517	67 472	72 780	19 061	26 772
Least Developed Countries	1 841	138	1 183	1 531	291	31	178	232	1 550	1 299
European Union(d)	15 920	933	8 392	11 037	38 489	2 725	25 587	25 227	-22 569	-14 190
OECD	90 087	7 239	54 674	69 588	100 591	7 744	65 706	67 309	-10 503	2 279

— nil or rounded to zero (including null cells)

(a) See Time series spreadsheets for details of all countries.

(b) From September 2008 imports data with confidentiality restrictions 'no commodity details' or 'no value details' are included in Other countries.

(c) Exports of Alumina to Egypt are excluded from country total and included in the 'Other Countries' category.

(d) The European Union includes 27 member countries for all periods.

	2009-10	Feb 2011	8 MONTHS ENDED FEBRUARY	
			2010	2011
			\$m	\$m
EXPORTS (a)				
New South Wales	31 205	2 942	20 002	23 636
Victoria	18 427	1 707	11 642	12 625
Queensland	43 266	2 575	26 368	32 179
South Australia	8 134	1 005	5 148	6 915
Western Australia	83 306	7 577	49 005	71 694
Tasmania	3 004	231	1 826	2 040
Northern Territory	4 977	381	3 230	3 675
Australian Capital Territory	4	1	4	3
State not available for publication(b)	557	25	326	218
Re-exports	7 841	576	5 366	5 066
Total	200 720	17 021	122 918	158 050
IMPORTS				
New South Wales	76 003	5 965	49 750	54 126
Victoria	53 118	4 347	34 765	37 908
Queensland	31 035	2 501	20 381	21 464
South Australia	6 446	507	4 261	4 190
Western Australia	27 937	2 278	18 357	16 915
Tasmania	715	46	511	428
Northern Territory	3 051	296	2 033	2 553
Australian Capital Territory	5	—	3	4
State not available for publication(c)	5 280	629	3 530	4 175
Total	203 590	16 569	133 592	141 764

— nil or rounded to zero (including null cells)

(a) State in which the final stage of production or manufacture occurs.

(b) Exports of Alumina to Bahrain, Egypt and Iceland are excluded from the state totals and included in 'State not available for publication'.

(c) From September 2008 imports data with confidentiality restrictions 'no commodity details' or 'no value details' are included in State not available for publication.

PERIOD AVERAGE EXCHANGE RATES(a), Per Australian dollar

<i>Period</i>	<i>United States dollar</i>	<i>UK pound sterling</i>	<i>Euro</i>	<i>Japanese yen</i>	<i>Special Drawing Right</i>	<i>Trade-weighted index of value of the A\$(b)</i>
FINANCIAL YEAR						
2007-08	0.8968	0.4479	0.6099	98.63	0.5664	69.7
2008-09	0.7456	0.4621	0.5414	73.99	0.4869	60.2
2009-10	0.8830	0.5590	0.6362	80.77	0.5710	68.9
MONTHS						
2009						
December	0.9028	0.5552	0.6174	80.89	0.5693	69.6
2010						
January	0.9148	0.5659	0.6400	83.49	0.5842	70.7
February	0.8863	0.5663	0.6474	79.99	0.5759	69.2
March	0.9120	0.6058	0.6716	82.58	0.5968	71.0
April	0.9265	0.6043	0.6902	86.45	0.6105	72.1
May	0.8717	0.5942	0.6928	80.38	0.5883	68.9
June	0.8529	0.5777	0.6976	77.48	0.5808	67.7
July	0.8743	0.5725	0.6852	76.63	0.5821	68.2
August	0.9000	0.5747	0.6976	76.87	0.5928	69.5
September	0.9358	0.6010	0.7169	78.99	0.6138	71.5
October	0.9812	0.6190	0.7060	80.26	0.6251	73.2
November	0.9902	0.6198	0.7239	81.61	0.6338	74.0
December	0.9909	0.6347	0.7497	82.58	0.6454	74.7
2011						
January	0.9941	0.6305	0.7457	82.16	0.6434	74.3
February	1.0086	0.6252	0.7383	83.29	0.6457	75.1

(a) These exchange rates and the trade-weighted index are derived using rates provided by the Reserve Bank of Australia in respect of each trading day.

(b) May 1970 = 100. The Trade-weighted index is reweighted annually on 1 October and on special occasions as required.

	2007-08	2008-09	2009-10	Aug 2010	Sep 2010	Oct 2010	Nov 2010	Dec 2010	Jan 2011
	\$m	\$m	\$m	\$m	\$m	\$m	\$m	\$m	\$m
BALANCE									
On goods and services	—	—	-30	56	58	-80	84	-118	-416
CREDITS									
Total goods and services	—	—	22	43	47	-53	-56	-28	-216
<i>Total goods</i>	—	—	—	52	63	46	60	53	-22
Rural goods	—	—	—	18	-1	2	-4	-10	-53
Non-rural goods	—	—	—	34	64	48	66	68	29
Net exports of goods under merchanting	—	—	—	—	—	—	—	—	—
Non-monetary gold	—	—	—	—	—	-4	-2	-5	2
<i>Total services</i>	—	—	22	-9	-16	-99	-116	-81	-194
DEBITS									
Total goods and services	—	—	-52	13	11	-27	140	-90	-200
<i>Total goods</i>	—	—	10	2	-2	14	184	-14	-12
Consumption goods	—	—	—	4	20	10	18	5	-4
Capital goods	—	—	—	—	1	—	147	-1	—
Intermediate and other merchandise goods	—	—	10	-2	-22	4	19	-18	-7
Non-monetary gold	—	—	—	—	-1	—	—	—	-1
<i>Total services</i>	—	—	-62	11	13	-41	-44	-76	-188

— nil or rounded to zero (including null cells)

(a) This table is presented consistent with BPM6 sign conventions. This means for the balance on goods and services a negative revision indicates a decrease in a surplus or an increase in a deficit. For debits a negative revision indicates an increase in debits while a positive revision indicates a decrease in debits.

EXPLANATORY NOTES

INTRODUCTION

1 This publication presents preliminary estimates of Australia's international trade in goods and services on a balance of payments basis (tables 1–11 and 17) and merchandise import and export statistics on a recorded trade basis (tables 12–15). In addition, table 16 Exchange rates and trade-weighted indexes are derived by using exchange rates and indexes provided by the Reserve Bank of Australia.

2 Merchandise trade statistics on a recorded trade basis are compiled from information submitted by exporters and importers or their agents to the Australian Customs and Border Protection Service (Customs and Border Protection). Adjustments for coverage, timing and valuation are made to recorded trade data to convert them to a balance of payments basis. The services data are sourced from the quarterly Survey of International Trade in Services and a range of administrative data and indicator series.

3 More comprehensive quarterly estimates of Australia's trade in goods and services, together with comprehensive details of Australia's balance of payments are included in the quarterly publication, *Balance of Payments and International Investment Position, Australia* (cat. no. 5302.0). Detailed monthly statistics on merchandise trade are available in Time Series Spreadsheets on the ABS website or by subscription to tailored services. More information on the *International Trade in Services by country, by state and by detailed services category* are available on a financial year basis (cat. no. 5368.0.55.003) with the September issue of this publication and calendar year basis (cat. no. 5368.0.55.004) with the March issue of this publication.

CONCEPTS, SOURCES AND METHODS

4 The conceptual framework used in compiling Australia's merchandise trade statistics can be found in *International Merchandise Trade, Australia: Concepts, Sources and Methods, 2001* (cat. no. 5489.0).

5 The conceptual framework used in compiling Australia's balance of payments statistics is based on the International Monetary Fund's *Balance of Payments and International Investment Position Manual, Sixth Edition (BPM6)*. Descriptions of the underlying concepts and structure of the balance of payments and the sources, methods and terms used in compiling estimates are presented in the publication *Balance of Payments and International Investment Position, Australia: Concepts, Sources and Methods, 1998* (cat. no. 5331.0). This version reflects the international standards prior to BPM6 and is currently being revised. The first part of the revised document was released on 8 March 2011, featuring only the Goods Account. Other components will be released as they become available. Further information on the key changes introduced with BPM6 can be found in the *Information paper: Implementation of new international statistical standards in the ABS National and International Accounts, September 2009* (cat. no. 5310.0.55.002).

6 To bring merchandise trade statistics on a recorded trade basis to a balance of payments basis, timing adjustments are made to ensure that the transaction is recorded in the period in which ownership changed, rather than in the period in which the transaction was recorded by Customs and Border Protection or the period in which the goods arrived in/departed from an Australian port. Adjustments are also made to account for the change of ownership of goods not included in merchandise trade statistics. Chapter 6 of cat. no. 5331.0 provides more detail on the relationship between statistics on international merchandise trade on a recorded trade basis and on a balance of payments basis.

7 Recorded trade exports data presented for recent months in tables 12–15 of this publication are based on information initially reported by exporters to Customs and Border Protection. At the time of initial reporting to Customs and Border Protection the final prices may not be known for some commodities. Therefore, the information recorded for recent months for commodities like iron ore and coal can include a variety of prices including previous or current contract prices and the prevailing spot prices.

EXPLANATORY NOTES *continued*

CONCEPTS, SOURCES AND METHODS *continued*

Newly negotiated contract prices may not be fully reflected in the data first reported to Customs and Border Protection, and to compensate for this, the balance of payments series may reflect adjusted price levels.

8 The Concepts, Sources and Methods publications and information papers are available to download for free from the ABS website. Select *Statistics*, then select *By Catalogue Number*, and then the catalogue numbers as above.

CLASSIFICATIONS

9 The merchandise trade data on a recorded trade basis are presented using the following commodity classifications:

- the Harmonised System 2007 (available on request)
- the Standard International Trade Classification (SITC Revision 4)
- the Classification by Broad Economic Categories (BEC)
- the industry classification: Australian and New Zealand Standard Industrial Classification, 2006 (ANZSIC 06) from July 2005.

10 The Balance of Payments 'goods and services' series are presented according to three classifications with the goods classifications derived from SITC Revision 4 and BEC. The classifications are:

- for goods:
 - the Balance of Payments Commodities for Exports (BoPCE)
 - the Balance of Payments Broad Economic Categories (BoPBEC) for Imports
- for services:
 - the Extended Balance of Payments Services Classification (EBOPS).

ACCURACY, RELIABILITY AND REVISIONS

11 While every effort is made to ensure the accuracy and reliability of estimates, most series are subject to revision as more complete and accurate information becomes available. Care should be exercised in the use and interpretation of estimates in this publication. The transactions occurring in international trade in goods and services are of many different kinds, and therefore the compilation of trade estimates entails the use of a very wide range of statistical data of varying degrees of accuracy and timeliness. For further information on the monthly services series, see paragraph 25.

12 The revisions are applied differently for merchandise trade and balance of payments series. Each month, merchandise trade data are revised for the previous six months to incorporate latest available data.

13 For the balance of payments 'goods and services' series, in original terms, no revisions are applied in the July, October, January or April issues. This is to ensure the monthly series align with the comparable series in the quarterly publication. In the September issue revisions can be applied to the four previous financial years. In other issues revisions can be applied to the previous and current financial years to incorporate the latest available survey and administrative data.

14 In seasonally adjusted and trend terms, revisions may occur at any time point but tend to focus on the most recent estimates. Please also refer to paragraphs 17 (seasonal adjustment) and 19 (trend estimates) below.

SIGN CONVENTION

15 In keeping with BPM6 conventions, balance of payments basis credit entries are shown with an implied positive sign and debit items are shown as negative entries. For statistics on a recorded trade basis, both imports and exports are shown without sign. The calculation of percentage changes on balance of payments debit items are made without regard to sign. References to balance of payments debit items in Key Figures, Key Points, and Analysis and Comments are also made without regard to sign.

EXPLANATORY NOTES *continued*

SEASONALLY ADJUSTED AND TREND ESTIMATES

16 The estimates of international trade in goods and services on a balance of payments basis are seasonally adjusted, however the merchandise exports and imports statistics on a recorded trade basis are not. Monthly original estimates are volatile, being subject to calendar-related and large irregular influences. Seasonally adjusted estimates are derived by estimating and removing from the original series systematic calendar related effects, such as seasonal (e.g. Christmas), trading day and moving holiday (e.g. Easter) influences. Seasonal adjustment does not aim to remove the irregular or non-seasonal influences which may be present in any particular month. These irregular influences may reflect both random economic events and difficulties of statistical recording.

17 The seasonally adjusted statistics in this publication use the concurrent seasonal adjustment technique and Autoregressive Integrated Moving Average (ARIMA) modelling to estimate factors for the current and previous months. Under concurrent seasonal adjustment, the estimates of seasonal factors are fine tuned as new or revised original estimates become available each period. The seasonally adjusted estimates are subject to revisions at each reference month as the estimates of seasonal factors are improved.

18 ARIMA modelling relies on the characteristics of the series being analysed to project future period data. ARIMA modelling is used on a case-by-case basis where it results in reduced revisions to seasonally adjusted series when subsequent data become available. The projected values are temporary, intermediate values, that are only used internally to improve the estimation of the seasonal factors. The projected data do not affect the original estimates and are discarded at the end of the seasonal adjustment process. The ARIMA model is assessed as part of the annual review and, following the 2010 annual review, 40 of the 46 directly seasonally adjusted trade in goods and services time series use an ARIMA model.

19 The month-to-month movements of the seasonally adjusted estimates may not be reliable indicators of underlying behaviour because they include irregular or non-seasonal movements. Trend estimates reduce the effect of these movements as they are derived by applying a 13-term Henderson moving average to the seasonally adjusted series. The 13-term Henderson moving average (like all Henderson averages) is symmetric, but as the end of a time series is approached, asymmetric forms of the average are applied. While the asymmetric weights enable trend estimates for recent months to be produced, it does result in revisions to the estimates for the most recent six months as additional observations become available. Revisions to trend estimates can also occur because of revisions to the original data and as a result of the re-estimation of the seasonal factors. Trend estimates should be used with caution, especially around the time of unusual influences, until these have been appropriately taken into account.

20 Information papers and articles on time series methods are available on the ABS website:

- for seasonal adjustment methods, see *Information Paper: An Introductory Course on Time Series Analysis, Jan 2005* (cat. no. 1346.0.55.001) and *Time Series Analysis Frequently Asked Questions, 2003* (cat. no. 1346.0.55.002)
- for ARIMA modelling, see *Feature article: Use of ARIMA modelling to reduce revisions* in the October 2004 issue of *Australian Economic Indicators* (cat. no. 1350.0)
- for trend estimates methods, see *Information Paper: A Guide to Interpreting Time Series – Monitoring Trends* (cat. no. 1349.0)
- alternatively contact the Assistant Director, Time Series Analysis on (02) 6252 6345 or e-mail: time.series.analysis@abs.gov.au.

EXPLANATORY NOTES *continued*

ECONOMIC TERRITORY

21 In accordance with BPM6 definitions, Australia's economic territory, on a balance of payments basis, is the area under the effective control of the Australian government. It includes the land area, airspace, territorial waters, including jurisdiction over fishing rights and rights to fuels and minerals. Australian economic territory also includes territorial enclaves in the rest of the world. These are clearly demarcated areas of land, located in other countries and which are owned or rented by the Australian government for diplomatic, military, scientific or other purposes. Specifically, the economic territory of Australia consists of:

- Geographic Australia which includes Cocos (Keeling) Islands and Christmas Island;
- Norfolk Island;
- Australian Antarctic Territory;
- Heard Island and McDonald Islands;
- Territory of Ashmore Reef and Cartier Island;
- Coral Sea Islands;
- Australia's territorial enclaves overseas; and
- the Joint Petroleum Development Area (joint territory between Australia and East Timor (Timor-Leste)).

22 Because of administrative complexities and measurement difficulties, Norfolk Island transactions with the rest of the world will not always be captured in all relevant balance of payments statistics. Most of the transactions involving Norfolk Island are not material to Australia's trade performance and not capturing these transactions will not distort these statistics. However, any significant transactions will be identified and included in the relevant statistics.

COMMODITY BREAKDOWN OF GOODS

23 For details of the classifications used to present goods exports (credits) and imports (debits) on a balance of payments basis, see tables 6.6 and 6.7, respectively, in *Balance of Payments and International Investment Position, Australia: Concepts, Sources and Methods* (cat. no. 5331.0).

24 The recorded trade statistics shown in tables 12 and 13 are classified by the Standard International Trade Classification (SITC). Imports and exports of goods at a more detailed level are available from the time series spreadsheets on the ABS website. All data from July 2005 are presented according to SITC Rev 4 and data prior to July 2005 are presented according to SITC Rev 3. For details refer to the 'Classifications and Standards Update' in the July 2008 issue of this publication.

MONTHLY SERVICES SERIES

25 Monthly indicators for many of the services components that are only surveyed quarterly are not available. Monthly estimates for the freight and other transportation components of services credits in table 9 are derived by dividing the quarterly estimate by three. Freight debits are derived directly from imports data for the reference month as a difference between total merchandise cost, insurance and freight (CIF) and free on board (FOB), adjusted to reflect timing and processing adjustments. For freight credits and other transportation credits and debits, estimates are derived by extrapolating the last quarter's data by an average of movements for the same quarter over the three previous years, and then dividing the estimate by three. Similarly other services estimates are derived by extrapolating the last quarter's data by an average of movements for the same quarter over the previous three years, and then dividing the estimate by three.

CONFIDENTIALITY OF MERCHANDISE TRADE STATISTICS

26 The release of statistics for certain merchandise trade commodities is restricted in order to prevent the identification of the activities of an individual business, where this is requested by the business concerned. These restrictions do not affect the total value of exports and imports, but they can affect statistics at the country, state and commodity levels. Imports data that have the confidentiality restrictions 'No commodity details' or 'No value details' are aggregated into a single confidential commodity code. For data prior to September 2008, these data are added back into the appropriate state total and

EXPLANATORY NOTES *continued*

CONFIDENTIALITY OF MERCHANDISE TRADE STATISTICS *continued*

country total (i.e. these totals show the correct level of trade). From September 2008 these confidential data are not added back. Instead the confidential data are published as 'No country details' in the country totals and 'State not available for publication' in the state totals. Therefore, country and state totals from September 2008 may not represent the actual amount of trade in each country/state but only the trade in commodities without a 'No commodity details' or 'No value details' restriction. For information on the confidentiality restrictions applied to the merchandise trade statistics in this publication, refer to the current issue of *International merchandise trade: Confidential Commodities List (CCL)* (cat. no. 5372.0.55.001).

TOURISM RELATED SERVICES

27 The tourism related services memorandum items provide timely indicators of the movements in tourism related activities, not an absolute measure of the level of these activities. The tourism related indicator has been derived by combining total travel services (business, education-related and other personal travel) and passenger transportation services (which includes agency fees and commissions for air transport).

SERVICES BY STATE AND BY PARTNER COUNTRY

28 Annual services data by state, by country and detailed services are released twice yearly. Calendar year data are usually released following the March issue of this publication and financial year data are usually released following the September issue. Refer to time series data for details.

29 Services credits are classified by the state of provision, while services debits are classified by the state of consumption. The state allocations for transportation, travel, postal and courier, and telecommunication services are based on a number of indicators including merchandise trade statistics by state, overseas passenger arrivals and departures by state of clearance and data provided by the Department of Immigration and Citizenship. The allocation for other services (about 25% of all trade in services) is primarily based on the location of the business reporting the information, which serves as a proxy for the state of provision/consumption of that service. The data should be used with care but are considered suitable for analysis over time.

30 A comprehensive explanation of the data sources used and the methodology applied in the compilation of partner country statistics is provided in Chapter 17 of *Balance of Payments and International Investment Position, Australia – Concepts, Sources and Methods* (cat. no. 5331.0). Approximately 4% of total services credits and 5% of total services debits for both 2008–09 and 2009–10 were either confidential, or unable to be allocated to individual countries.

ABS DATA AVAILABLE

31 More detailed balance of payments and recorded merchandise trade data, including forward seasonal factors are available as time series spreadsheets or data cubes from the ABS website. Merchandise trade data by commodity, country and state that are not on the ABS website may be available on request. Inquiries should be made to the National Information and Referral Service as shown on the back of this publication.

RELATED PRODUCTS AND PUBLICATIONS

32 Users may also wish to refer to the following publications which can be downloaded free of charge from the ABS website by using the 'Statistics' tab and selecting the relevant catalogue number:

- *Balance of Payments and International Investment Position, Australia* (cat. no. 5302.0) – issued quarterly
- *International Merchandise Imports, Australia* (cat. no. 5439.0) – issued monthly
- *International Trade Price Indexes, Australia* (cat. no. 6457.0) – issued quarterly
- *Balance of Payments and International Investment Position, Australia: Concepts, Sources and Methods* (cat. no. 5331.0)
- *Information Paper: Quality of Australian Balance of Payments Statistics* (cat. no. 5342.0)

EXPLANATORY NOTES *continued*

RELATED PRODUCTS AND PUBLICATIONS *continued*

- *International Merchandise Trade, Australia: Concepts, Sources and Methods* (cat. no. 5489.0)
- *A Guide to Australian Balance of Payments and International Investment Position Statistics* (cat. no. 5362.0.55.001).

33 Current publications and other products released by the ABS are available from the 'Statistics' tab on the ABS website. The ABS also issues a daily *Release Advice* on the website which details products to be released in the week ahead. A *foreign trade theme page* and a *balance of payments theme page* are available on the ABS website. Select *Topics @ a Glance – Economy – Foreign Trade or Balance of Payments*. This page provides direct links to all foreign trade and balance of payments related data and publications, recent changes and forthcoming events, links to relevant websites and a range of other information about the Australian International Accounts.

ROUNDING

34 Where figures have been rounded, discrepancies may occur between sums of the component items and totals. Percentage movements are calculated from data at the level of precision presented in this publication (i.e. \$m) except for international merchandise trade tables.

ABBREVIATIONS

\$b	billion (thousand million) dollars
\$m	million dollars
ABS	Australian Bureau of Statistics
ANZSIC	Australian and New Zealand Standard Industrial Classification
APEC	Asia Pacific Economic Co-operation
ASEAN	Association of South-East Asian Nations
BEC	Classification by Broad Economic Categories
BoPBEC	Balance of Payments Broad Economic Categories
EMS	Environmental Management Survey
f.o.b.	free on board
n.e.s.	not elsewhere specified
n.i.e.	not included elsewhere
OECD	Organisation for Economic Co-operation and Development
SAR	Special Administrative Region
SITC	Standard International Trade Classification

APPENDIX RELATED ARTICLES

<i>Article</i>	<i>Source(a)</i>	<i>Issue</i>
Investment		
Foreign ownership of equity	5302.0	Sep qtr 2007
Kangaroo bonds	1301.0	2006
Foreign currency exposure	5308.0	Mar qtr 2005
Gross external debt	5302.0	Sep qtr 2003
Balance of payments		
International comparison of balance of payments statistics	(b) 5363.0	1998–99
Merchandise trade		
Information Paper: Proposed Changes to Statistical Codes in the AHECC, 2012	5368.0.55.015	Feb 2011
Characteristics of Australian Exporters	5368.0.55.006	2009–10
Export And Import Invoice Currencies, Dec 2009	5368.0	Dec 2009
Export and import invoice currencies, 2007	5368.0	Dec 2007
100 years of international trade statistics	5368.0	Oct 2007
New methodology for deriving counts of Australian exports	5368.0	Feb 2006
Australia's Importers, 2003–04	5368.0	Nov 2004
Australia's Exporters, 2003–04	5368.0	Oct 2004
Australia's trade with the USA	5368.0	Mar 2004
Foreign ownership of Australian exporters and importers	5496.0.55.001	2002–03
Major commodities traded by Australia, 1991 to 2000	(b) 5422.0	Dec qtr 2000
Trade in services		
International trade in services by partner country, 2006, preliminary	5368.0	Dec 2006
Changes to International trade in services statistics, August 2006	5368.0	Aug 2006
Changes to International trade in services travel statistics	5368.0	Aug 2005
Finance		
Impact of the farm season on Australian production in 2002–03 and 2003–04	1301.0	2005
Recent trends in construction and first home buyers finance	5609.0	Mar 2002
Household sector data in the financial accounts	5232.0	Mar qtr 2002
Technical information		
Implementation of new international statistical standards in ABS National and International Accounts, September 2009	5310.0.55.002	Oct 2009
Estimation of Workers' Remittances based on Balance of Payments and International Investment Position Manual, Sixth Edition	5302.0.55.003	Sep 2009
Impact of revised international standards on monthly International Trade in Goods and Services	5368.0.55.014	Aug 2009
Changes to International Trade in Goods Statistics - Countries and Ports	5368.0.55.013	Jul 2009
Revisions to international standards in quarterly Balance of Payments and International Investment Position statistics from September 2009	5302.0.55.002	2009
Revisions to international standards in monthly international trade in goods and services statistics from August 2009	5368.0.55.012	2009
Changes to International Trade in Goods Industry Statistics, July 2009	5368.0.55.011	Dec 2008
Technical note 1 - Income on debt	5302.0	Jun qtr 2008
Technical note 2 - Use of CDI data	5302.0	Jun qtr 2008
Impact of introducing Revision 4 of the Standard International Trade Classification	5368.0.55.010	2008
Changes to international trade statistics July 2008	5368.0.55.009	2007–08
Introduction of revised international standards in ABS economic statistics in 2009	5310.0.55.001	2007
Changes on 1 January 2007 to Statistical Codes in the AHECC and the Customs Tariff	1233.0.55.001	Nov 2006
ABS implementation in January 2007 of revisions to international trade classifications, 2007	5368.0.55.005	Jun 2006
Revised treatment of Goods for Processing in Merchandise Trade and Balance of Payments Statistics	5368.0	May 2006
Impact of Customs and ABS changes on import statistics from October 2005	5439.0	Oct 2005
ABS management of the impact of the implementation of the imports component of the New Customs System	5439.0	Aug 2005
Changes to country and port classifications	5368.0	May 2003
Implementation of New Customs Systems	5368.0	Aug 2004
The effect of customs changes on export statistics	5422.0	Jun qtr 2002
Data confidentiality	5422.0	Dec qtr 1999

- (a) In the ABS website home page, select Statistics; By Catalogue Number; and click on the specified catalogue number and issue. Note: in some instances, a particular issue of the publication can be found in the Past & Future Releases page of the catalogue.
- (b) This article can be found in pdf format by referring to the Downloads page of the specified issue of this publication on the ABS website.

FOR MORE INFORMATION . . .

INTERNET **www.abs.gov.au** the ABS website is the best place for data from our publications and information about the ABS.

INFORMATION AND REFERRAL SERVICE

Our consultants can help you access the full range of information published by the ABS that is available free of charge from our website. Information tailored to your needs can also be requested as a 'user pays' service. Specialists are on hand to help you with analytical or methodological advice.

PHONE 1300 135 070

EMAIL client.services@abs.gov.au

FAX 1300 135 211

POST Client Services, ABS, GPO Box 796, Sydney NSW 2001

FREE ACCESS TO STATISTICS

All statistics on the ABS website can be downloaded free of charge.

WEB ADDRESS www.abs.gov.au